

DISGCL 11.1

A Graphics

Command Language

by

Helmut Michels

Contents

1	Overview	1
1.1	Introduction	1
1.2	Syntax of the DISGCL Command	1
1.3	Syntax of DISGCL Script Files	2
1.4	Syntax of Statements	2
1.5	Data Types	4
1.6	Expressions	4
1.7	Quickplots	4
1.8	FTP Site, WWW Homepage	5
1.9	Reporting Bugs	5
2	Data Types, Variables	7
2.1	Data Types	7
2.2	Variables	7
2.3	System Variables	8
2.4	Specifying Constants	8
2.5	Arrays	8
2.6	Subscripts	9
2.7	Character Arrays and Strings	9
3	Expressions and Operators	11
3.1	Operators	11
3.2	Array Operations	12
3.3	Type Conversions	12
3.4	Type Conversion Functions	14
4	Statements	15
4.1	Identification of Script Files	15
4.2	Comment Lines	15
4.3	Calling DISLIN Routines	15
4.3.1	Calling DISLIN Subroutines	15
4.3.2	Calling DISLIN Functions	16
4.3.3	Passing Parameters to DISLIN Routines	16
4.4	DISGCL Commands	16
4.5	Initializing Arrays with { }	17
4.6	The IF Statement	17
4.7	IF Constructs	17
4.8	SWITCH Statements	18
4.9	The DO Statement	18
4.10	The WHILE Statement	19
4.11	The BREAK Statement	19
4.12	The CONTINUE Statement	20

4.13	The GOTO Statement	20
4.14	Executing System Commands	20
5	DISGCL Commands	21
5.1	Termination of DISGCL	21
5.2	Getting Help	21
5.3	Including DISGCL Files	21
5.4	Listing Variables	21
5.5	Freeing Variables	22
5.6	The PRINT Command	22
5.7	Logging Commands	22
5.8	Creating Arrays	22
6	User-defined Subroutines and Functions	23
6.1	Calling User-defined Subroutines	23
6.2	Calling User-defined Functions	23
6.3	The SUBROUTINE Statement	24
6.4	The FUNCTION Statement	24
6.5	The EXTERN Statement	24
6.6	The RETURN Statement	24
6.7	Parameters	25
7	Quickplots	27
7.1	The PLOT Command	27
7.2	The SCATTR Command	27
7.3	The PLOT3 Command	28
7.4	The PLOT3R Command	28
7.5	The SURF3 Command	28
7.6	The SURFACE Command	28
7.7	The SURSHADE Command	28
7.8	The CONTOUR Command	29
7.9	The CONSHADE Command	29
7.10	Scaling of Quickplots	29
7.11	Quickplot Variables	30
8	Data Files	33
8.1	Syntax of Data Files	33
8.2	Data File Routines	33
8.3	Example	35
9	Input and Output	37
9.1	Formatted Output with PRINTF	37
9.2	Formatted Output with SPRINTF	39
9.3	Formatted Input with SCANF	40
9.4	Formatted Input with SSCANF	40
9.5	File Access	41
9.6	Formatted Output to Files	43
9.7	Formatted Input from Files	43
9.8	Text Input and Output Functions	43
9.9	Binary Input and Output Functions	44
9.10	Example	45

A	Intrinsic Functions	47
A.1	Mathematical Functions	47
A.2	Type Conversion Functions	48
A.3	Complex Functions	48
A.4	Array Functions	49
A.5	Variable and Parameter Functions	49
A.6	Data File Functions	50
A.7	Memory Allocating Functions	50
A.8	String Functions	51
A.9	File Functions	51
A.10	Input and Output Functions	52
A.11	System Functions	53
A.12	Time Functions	53
A.13	Random Number Functions	53
B	Short Description of DISLIN Routines	55
B.1	Initialization and Introductory Routines	55
B.2	Termination and Parameter Resetting	56
B.3	Plotting Text and Numbers	56
B.4	Colours	57
B.5	Fonts	58
B.6	Symbols	58
B.7	Axis Systems	59
B.8	Secondary Axes	60
B.9	Modification of Axes	60
B.10	Axis System Titles	61
B.11	Plotting Data Points	61
B.12	Legends	62
B.13	Line Styles and Shading Patterns	63
B.14	Cycles	64
B.15	Base Transformations	64
B.16	Shielding	64
B.17	Parameter Requesting Routines	64
B.18	Elementary Plot Routines	66
B.19	Conversion of Coordinates	67
B.20	Utility Routines	67
B.21	Binary File I/O	68
B.22	Date Routines	68
B.23	Cursor Routines	69
B.24	Transparency	69
B.25	Bar Graphs	69
B.26	Pie Charts	70
B.27	Coloured 3-D Graphics	70
B.28	3-D Graphics	71
B.29	Geographical Projections	74
B.30	Contouring	75
B.31	Image Routines	76
B.32	Window Routines	77
B.33	Widget Routines	77
B.34	DISLIN Quickplots	80
B.35	Reading FITS Files	80
B.36	MPS Logo	80

C	Examples	81
C.1	Demonstration of CURVE	82
C.2	Polar Plots	84
C.3	3-D Colour Plot	86
C.4	Surface Plot	88
C.5	Contour Plot	90
C.6	Shaded Contour Plot	92
C.7	World Coastlines and Lakes	94
C.8	Widgets	96
	Index	99

Chapter 1

Overview

1.1 Introduction

This manual describes the graphics command language DISGCL which is an interpreter based on the graphics software DISLIN. All DISLIN statements can be written to a script file and then be executed with DISGCL, or can be entered in an interactive mode.

Similar to programming languages such as Fortran and C, high-level language elements can be used within DISGCL. These are variables, operators, expressions, array operations, loops, if and switch statements, user-defined subroutines and functions, and file I/O routines.

An easy to use interface for data input is given to include data into DISGCL jobs. The format of data files is very simple and useful for most DISLIN plotting routines.

Several quickplots are offered by DISGCL which are collections of DISLIN statements to display data with one command.

1.2 Syntax of the DISGCL Command

The DISGCL command has the following syntax:

Command: `disgcl [filename[.gcl]] [args] [options]`

filename is the name of a DISGCL script file. The extension '.gcl' is optional.

args are optional arguments that can be passed to DISGCL scripts. The arguments are stored in the system variables %ARG1, %ARG2, ..., %ARGn, or can be requested with the function GETARG (i), $1 \leq i \leq n$. The number of passed arguments is stored in the system variable %NARGS.

options is an optional field of keywords separated by blanks:

-D=device defines the format of the metafile created by DISLIN. This parameter will overwrite the keyword in the DISLIN routine METAFL and can have the same values as the parameter in METAFL.

-F=file defines the file used for data input. This parameter will overwrite the file parameter in the routine DATFIL.

-I=file replaces the file parameter of the first INCLUDE statement in an DISGCL script file. This option can be used to initialize variables with different values.

-f means that the extension '.gcl' is not added to the filename.

-o opens a console window on Windows systems.

-v prints program version and author.

Notes:

- If no parameters are specified, DISGCL runs in interactive mode.
- DISGCL searches the current working directory for the DISGCL script file. If the search fails, DISGCL searches the directory defined by the environment variable GCL_PATH.
- On UNIX systems, an DISGCL script file can be executed directly if the following line is included at the beginning of the script file:

```
#!/path/disgcl -f
```

where path is the directory containing the disgcl executable.

1.3 Syntax of DISGCL Script Files

DISGCL script files must have the following syntax:

- A DISGCL script file must begin with the identifier '%GCL'.
- Each line may contain up to 132 characters.
- The current statement can be continued on the next line if a masterspace (@) is used at the end of the line.
- Lines are allowed to carry trailing comment fields, following a double slash (//) or the '#' character. Empty lines are also be interpreted as comment lines.
- Keywords and routine names can be in upper and lowercase letters.
- String constants must be enclosed in a pair of either apostrophes or quotation marks.

Example:

```
%GCL
SUM = 0
DO I = 1, 10
    SUM = SUM + I
END DO
PRINT SUM
```

1.4 Syntax of Statements

The following statements can be used in DISGCL script files, or can be typed directly at the DISGCL prompt.

Command	Description
%GCL	Identifier for DISGCL script files.
// Comment or # Comment	Comment line and inline comments.
routine (parameter list)	Call of a DISLIN or DISGCL routine.
CALL routine (parameter list)	Call of a user-defined subroutine.
v = function (parameter list)	Call of a DISLIN, DISGCL or user-defined function.
v = expression	Assigns the value of the expression to the variable v.
command [parameter list]	DISGCL command.
vray = { constant list }	Creates and initializes an integer or floating point array.
IF (expression) statement	IF statement (conditional statement).
IF (expression) statements ELSE IF (expression) statements ELSE statements END IF	IF construct. Up to 8 IF constructs can be nested. The ELSE IF and the ELSE parts are optional.
DO v = expr1, expr2 [,expr3] statements END DO	DO loop. Up to 8 loops can be nested.
WHILE (expr) statements END WHILE	WHILE loop. Up to 8 loops can be nested.
SWITCH (iexpr) CASE n1: statements CASE n2: statements DEFAULT: statements END SWITCH	SWITCH statement where iexpr must be an integer expression and n1, n2, ... integer constants. Up to 8 SWITCH statements can be nested.
label:	Label statement.
GOTO label	GOTO statement.
\$command	Executes a system command.

Figure 1.1: DISGCL Statements

1.5 Data Types

Variables in DISGCL are dynamic. They don't have to be declared, and they can change their types during the lifetime of a DISGCL session. The following data types are known by DISGCL:

CHAR	an 8-bit integer in the range -128 to 127.
BYTE	an 8-bit integer in the range 0 to 255.
SHORT	an 16-bit integer in the range -32768 to 32767.
INT	an 32-bit integer in the range -2147483648 to 2147483647.
FLOAT	an 32-bit floating point number in the range 1.2E-38 to 3.4E+38 and with 7-digit precision.
DOUBLE	an 64-bit floating point number in the range 2.2E-308 to 1.8E+308 and with 15-digit precision.
COMPLEX	a pair of 32-bit floating point numbers in the range 1.2E-38 to 3.4E+38.
STRING	a sequence of characters. Strings are stored as CHAR arrays terminated with the ASCII value zero.

1.6 Expressions

An expression is a combination of operands and operators. The operands can be constants, variables and functions, and may be scalars or arrays. Expressions can be assigned to variables or can be passed as parameters to subroutines and functions.

Example:

```
a = 60
x = exp (sin (a * 3.14159))
```

1.7 Quickplots

DISGCL offers several quickplots which are collections of DISLIN routines that can display data with one command. For example, the DISGCL command PLOT displays two-dimensional curves.

Example:

```
x = faloc (100)
plot x, sin (x/5)
```

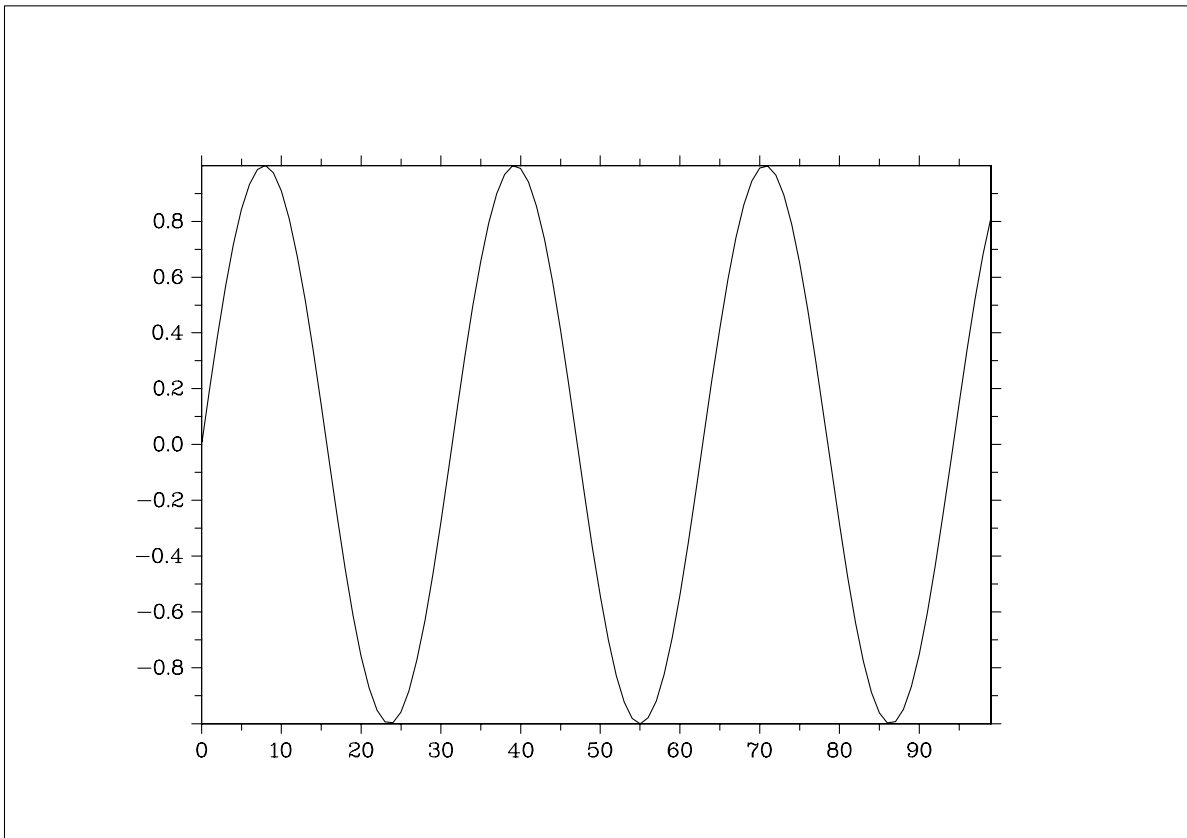


Figure 2.1: Example of the PLOT Command

Note:

All quickplots have corresponding widget interfaces that can be executed with the command
`disgcl quickplot`

where quickplot is the name of a quickplot. The widget interfaces for quickplots expect data in the form of data files described in chapter 8, 'Data Files'.

1.8 FTP Site, WWW Homepage

DISGCL and DISLIN are available via ftp anonymous from the following site:

`ftp://ftp.gwdg.de/pub/grafik/dislin`

The DISLIN Homepage is:

`http://www.dislin.de`

1.9 Reporting Bugs

DISGCL bugs can be reported to the author:

Helmut Michels
Max-Planck-Institut für Sonnensystemforschung
Justus-von-Liebig-Weg 3, 37077 Göttingen, Germany
E-Mail: `michels@dislin.de`

Chapter 2

Data Types, Variables

This chapter explains the DISGCL data types and shows how to specify constants and variables.

2.1 Data Types

As described in the last chapter, DISGCL data can have the following types:

Type	Number of Bytes	Range
CHAR	1	-128 - 127
BYTE	1	0 - 255
SHORT	2	-32768 - 32767
INT	4	-2147483648 - 2147483647
FLOAT	4	1.2E-38 - 3.4E+38
DOUBLE	8	2.2E-308 - 1.8E+308
COMPLEX	8	1.2E-38 - 3.4E+38
STRING	n + 1	

Figure 2.1: Data Types

2.2 Variables

All data in DISGCL are variables or constants. As in other programming languages, variables can change their values during the lifetime of a DISGCL session. But in DISGCL, variables can also change their types, and they don't have to be declared.

The following rules are applied to variables:

- The first character must be a letter. Other characters can be letters, digits, or underscores.
- The first 16 characters of variable names are significant.
- DISGCL is not case-sensitive. Variable names, keywords, functions, routines and parameters can be specified in uppercase and lowercase letters.

2.3 System Variables

System variables are special variables with a predefined meaning. For example, system variables can be used to set options for quickplots. System variables begin with the '%' character and are available to all DISGCL units such as subroutines and functions.

2.4 Specifying Constants

Constants are data that cannot change their values during the life of a DISGCL session. Constants can be integers, floating point numbers and strings.

Integer constants can be specified in decimal or hexadecimal notation. Floating point constants contain a decimal point and can have an exponential part preceded by e or E. String constants must be enclosed in a pair of either apostrophes or quotation marks. Complex constants contain the keyword 'COMPLEX' and a real and imaginary part. The imaginary part is optional and assumed to be zero if it is omitted.

Examples:

Constant	Type
120	Decimal
0xFF	Hexadecimal
0.56	Floating point
3.6E2	Floating point
"ABC"	String
'abc'	String
COMPLEX (3,4)	COMPLEX
COMPLEX (7)	COMPLEX

Figure 2.2: Constants

2.5 Arrays

An array is a collection of data that share the same type and a common name. Array elements can be accessed by specifying subscripts in square brackets. Multidimensional arrays can be defined and accessed by specifying subscripts separated by commas.

Examples:

A[i] = 5

B[i, j] = 8

C[0, 10, 5] = 3.5

There are several ways to create arrays in DISGCL:

- If an expression is assigned to a variable and the value of the expression is an array, the variable will also be an array.
- The DISGCL commands CHAR, BYTE, SHORT, INT, FLOAT, DOUBLE and COMPLEX create corresponding arrays and initialize them with zeros.

Example:

INT A[10], B[20,10]

- Integer and floating point arrays can be created and initialized with the statement:

vray = { list }

where list is a constant list of integers or floating point numbers separated by commas.

Notes:

- Array elements begin with the number 0.
- If a subscript of an array is out of range, DISGCL prints a warning and cancels the calculation.
- Multidimensional arrays are stored by rows.
- If a subscript appears in a string or a CHAR array, the corresponding element is handled as an integer where the value of the integer is the ASCII code of the element.

2.6 Subscripts

Subscripts can be used to access single array elements or sections of arrays. The following are examples of array subscripts:

A[i]	Element i of array A
A[i:j]	Array section of size j - i + 1
B[i1:i2, j]	Elements i1 to i2 of column j
B[:i2, j]	Elements 0 to i2 of column j
B[i1:, j]	Elements i1 to m - 1 of column j
B[* , j]	The whole column j.

2.7 Character Arrays and Strings

Strings in DISGCL are stored as character arrays terminated with ASCII value zero. Normally, strings and character arrays can be used in the same way if character arrays contain a string terminator. Some I/O functions require character arrays instead of strings to store characters. Character arrays can be defined with the CHAR command.

Chapter 3

Expressions and Operators

An expression is a combination of operands and operators. The operands can be constants, variables and functions, and may be scalars or arrays. The operators are displayed in the following paragraph.

3.1 Operators

Figure 3.1 shows all DISGCL operators and summarizes the rules for precedence and associativity of operators.

Priority	Operator	Meaning	Associativity
1	**	Exponentiation	Right to left
2	-	Unary minus	Right to left
	+	Unary plus	Right to left
	!	Logical NOT	Right to left
3	*	Multiplication	Left to right
	/	Division	Left to right
	%	Modulus	Left to right
4	+	Addition	Left to right
	-	Subtraction	Left to right
5	<	Less than	Left to right
	<=	Less than or equal	Left to right
	>	Greater than	Left to right
	>=	Greater than or equal	Left to right
	==	Equal	Left to right
	!=	Not equal	Left to right
6	&&	Logical AND	Left to right
		Logical OR	Left to right

Figure 3.1: Operators

The first column in figure 3.1 gives the precedence of an operator. This means that when two operators have different precedence, the operator with the higher precedence is evaluated first. The highest precedence is 1.

When two operators have the same precedence, they are evaluated in the direction specified in the last column 'Associativity'.

The order of normal precedence can be changed by enclosing expressions in parenthesis.

Examples:

$3 * 2 + 1$ has the value 7 since the operator '*' has a higher precedence than the operator '+'.

$2 * 3 / 2$ has the value 3 since '*' and '/' are evaluated from left to right.

$2 ** 2 ** 3$ has the value 256 since '**' is evaluated from right to left.

3.2 Array Operations

In DISGCL, the operands in an expression can be scalars and arrays. Figure 3.2 shows the allowed array operations:

Operation	Value
array + array	array
array - array	array
array / array	array
array * array	array
array ** array	array
array + scalar	array
scalar + array	array
array - scalar	array
scalar - array	array
array * scalar	array
scalar * array	array
array / scalar	array
scalar / array	array
array ** scalar	array
scalar ** array	array

Figure 3.2: Array Operations

3.3 Type Conversions

When an operator has operands of different types, they are converted to a common type. Figure 3.3 shows the rules for type conversions if both operands are scalars or both are arrays:

	BYTE	SHORT	INT	FLOAT	DOUBLE
BYTE	BYTE	SHORT	INT	FLOAT	DOUBLE
SHORT	SHORT	SHORT	INT	FLOAT	DOUBLE
INT	INT	INT	INT	FLOAT	DOUBLE
FLOAT	FLOAT	FLOAT	FLOAT	FLOAT	DOUBLE
DOUBLE	DOUBLE	DOUBLE	DOUBLE	DOUBLE	DOUBLE

Figure 3.3: Type Conversions

Notes:

- The only allowed operation between strings is the concatenation with the '+' operator.
- Complex operands can be used with other operands. The result is complex.

When one operand is a scalar and the other operand an array, the value of the expression is also an array. The following figure shows the rules for type conversions between scalars and arrays:

Scalar/Array	BYTE	SHORT	INT	FLOAT	DOUBLE
BYTE	BYTE	SHORT	INT	FLOAT	DOUBLE
SHORT	BYTE	SHORT	INT	FLOAT	DOUBLE
INT	BYTE	SHORT	INT	FLOAT	DOUBLE
FLOAT	*	*	FLOAT	FLOAT	DOUBLE
DOUBLE	*	*	FLOAT	FLOAT	DOUBLE

Figure 3.4: Type Conversions between Scalars and Arrays

Note:

A '**' means that this operation is not allowed. A warning will be displayed by DISGCL if this operation appears in an expression.

3.4 Type Conversion Functions

DISGCL provides a set of functions that convert types of variables and expressions. The conversion functions are as follows:

Function	Meaning
BYTE (x)	converts x to BYTE.
CHAR (x)	converts x to CHAR.
SHORT (x)	converts x to SHORT.
INT (x)	converts x to INT.
FLOAT (x)	converts x to FLOAT. If x is complex, FLOAT returns the real part of x.
DOUBLE (x)	converts x to DOUBLE.
COMPLEX (x, y)	converts to COMPLEX. x is converted to the real, y to the imaginary part. The second parameter y is optional.
STRING (x)	converts x to STRING.

Figure 3.5: Type Conversion Functions

Note:

Normally, type conversion functions check operands for overflow and print warnings.

Examples:

Example	Meaning
INT A[100] A = FLOAT (A)	converts A to a floating point array.
Z = COMPLEX (3, 4)	creates the complex number Z with the real part 3 and the imaginary part 4.
Z = COMPLEX (3)	creates the complex number Z with the real part 3 and the imaginary part 0.
IR = {65, 66, 67, 68} S = STRING (IR)	creates the string S = 'ABCD'.

Figure 3.6: Type Conversion Examples

Chapter 4

Statements

This chapter describes the statements that can appear in DISGCL script files, or can be entered at the DISGCL prompt.

4.1 Identification of Script Files

DISGCL script files must begin with the string '%GCL' where the string can appear in upper or lowercase letters.

Example:

```
%GCL  
PRINT 3 + 4
```

4.2 Comment Lines

Empty lines and lines beginning with a double slash (//) or a '#' character are interpreted as comment lines. Lines are also allowed to carry trailing comment fields, following a double slash.

Example:

```
%GCL  
// This is a comment  
PRINT 3 + 4      // This is also a comment
```

4.3 Calling DISLIN Routines

About 500 DISLIN routines for plotting and parameter setting can be executed from DISGCL. DISLIN routines can either be subroutines that return no value, or functions that return a value.

4.3.1 Calling DISLIN Subroutines

DISLIN subroutines can be executed with the statement:

```
routine (list)
```

where routine is the name of a DISLIN routine and list the parameters of the routine separated by commas.

Example:

```
%GCL
METAFL ('CONS')
DISINI ()
GRAF (0., 10., 0., 2., 0., 5., 0., 1.)
DISFIN ()
```

4.3.2 Calling DISLIN Functions

DISLIN functions can be executed with the statement:

```
v = function (list)
```

where function is the name of a DISLIN function and list the parameters of the function separated by commas.

4.3.3 Passing Parameters to DISLIN Routines

Actual parameters in DISLIN routines can be constants, variables and expressions. Integer constants must be specified without decimal points, floating point constants can be passed without decimal points. Normally, arrays must be passed to DISLIN routines as integer or floating point arrays.

DISGCL checks the number and types of parameters passed to DISLIN routines. If an error occurs, a warning is printed on the screen and the call of the routine will be ignored.

Example:

```
N = TRMLEN (1)
```

DISGCL will print the warning:

```
>>>> Paramter mismatch
      User   : TRMLEN (I)
      Correct : TRMLEN (S)
```

The abbreviations in parameter mismatch warnings have the meaning:

I	denotes an integer parameter.
X	denotes a floating point, integer or double parameter.
D	denotes a double parameter.
S	denotes a string.
BR	denotes a byte array.
IR	denotes an integer array.
FR	denotes a floating point array.
DR	denotes a double array.

4.4 DISGCL Commands

A DISGCL command can be executed with the statement

```
command [list]
```

where command is the name of a DISGCL command and list the parameters of the command separated by commas. Several DISGCL commands are explained in the next chapter.

Example:

```
PRINT FALLOC(10)
```

4.5 Initializing Arrays with { }

Integer and floating point arrays can be created and initialized with the statement

```
vray = { list }
```

where list is a constant list of integers or floating point numbers separated by commas.

Note: Arrays can also be created and initialized with the functions FALLOC, DALLOC and IALLOC, and with the DISGCL commands BYTE, CHAR, SHORT, INT, FLOAT, DOUBLE and COMPLEX.

4.6 The IF Statement

The IF statement executes a statement if a logical expression is true. The syntax is:

```
IF (expr) statement
```

Example:

```
IF (I < 10) A = 1
```

4.7 IF Constructs

IF constructs are statements for decision making. The syntax is:

```
IF (expression)
    statements
ELSE IF (expression)
    statements
ELSE
    statements
END IF
```

If expression is true, the statements in the IF block will be executed; if expression is false, control is transferred to the next ELSE IF, ELSE or END IF statement.

Example:

```
IF (A > 0)
    ISIGN = 1
ELSE IF (A < 0)
    ISIGN = -1
ELSE
    ISIGN = 0
END IF
```

Notes:

- Up to 8 IF constructs can be nested.
- The ELSE IF and ELSE blocks are optional.
- Multiple ELSE IF blocks can be specified.

4.8 SWITCH Statements

The SWITCH statement is a multi-way decision that tests whether an expression matches one of the number of constant integer values. The syntax is:

```
SWITCH (iexpr)
  CASE n1:
    statements
  CASE n2:
    statements
  .....
  DEFAULT:
    statements
END SWITCH
```

Each case must be labeled by an INT constant while iexpr can be an integer expression. If a case matches iexpr, execution starts at that case. The case labeled DEFAULT is executed if none of the other cases are satisfied. The DEFAULT case is optional.

The following example counts the number of characters and the number of blanks in a string .

```
%GCL
S = 'This is a test'
I = 0
NCHAR = 0
NBLANK = 0
WHILE (S[I] != 0)
  SWITCH (S[I])
    CASE 32:
      NBLANK = NBLANK + 1
    DEFAULT:
      NCHAR = NCHAR + 1
  END SWITCH
  I = I + 1
END WHILE
PRINT NCHAR, NBLANK
```

Notes:

- Up to 8 SWITCH statements can be nested.
- The BREAK statement causes an immediate exit from a SWITCH statement.

4.9 The DO Statement

The DO statement can be used to repeat statements a set number of times. The syntax is:

```
DO v = expr1, expr2 [,expr3]
  statements
END DO
```

where

- v is a loop counter.
- expr1 is an expression that initializes v.
- expr2 is an expression that defines the end of the loop range.

expr3 is an optional expression that will be used as an increment for the loop counter. The value cannot equal zero. The default value is 1.

The following restrictions apply to DO loops:

- Up to 8 DO loops can be nested.
- Jumping into a DO loop from outside its range is not allowed.
- Overlapping of DO and IF constructs are not allowed.

Notes:

- The loop counter of a DO loop can be modified by statements within the loop.
- Whenever possible, array data should be processed by array operations instead of operations in a loop. Array operations are much more faster than loop operations.

4.10 The WHILE Statement

A WHILE loop repeats as long as a given condition remains true. The syntax is:

```
WHILE (expr)
  statements
END WHILE
```

Example:

```
I = 0
SUM = 0
WHILE (I < 10)
  I = I + 1
  SUM = SUM + I
END WHILE
```

The following restrictions apply to WHILE loops:

- Up to 8 WHILE loops can be nested.
- Jumping into a WHILE loop from outside its range is not allowed.
- Overlapping of WHILE and IF constructs are not allowed.

4.11 The BREAK Statement

The BREAK statement causes an immediate exit from a SWITCH, DO and WHILE construct.

Example:

```
I = 0
WHILE (I < 10)
  I = I + 1
  PRINT I
  IF (I == 3) BREAK
END WHILE
```

The output of the example is:

```
1
2
3
```

Note:

The BREAK statement ends only the loop in which it appears.

4.12 The CONTINUE Statement

The CONTINUE statement can be used to skip all following statements in a loop and to execute the loop with the next iteration.

Example:

```
DO I = 1, 5
  IF ( I == 3) CONTINUE
  PRINT I
END DO
```

The output of the example is:

```
1
2
4
5
```

4.13 The GOTO Statement

The GOTO statement makes a jump to another part of the DISGCL file. The syntax is:

```
GOTO Label
```

where Label is the name of a label. For label names, the same rules as for variable names are applied.

The target of the GOTO statement must be a label statement which has the syntax:

Label:

Example:

```
I = 0
L1:
I = I + 1
PRINT I
IF ( I < 5) GOTO L1
```

The output of the example is:

```
1
2
3
4
```

4.14 Executing System Commands

System commands can be executed with the statement

```
$Command
```

where Command is a system command.

Example:

```
$DIR
```

displays the files in the current directory if the operating system is MS-DOS or VMS (use \$!s for UNIX).

Chapter 5

DISGCL Commands

This chapter describes several DISGCL commands.

5.1 Termination of DISGCL

The command EXIT terminates a DISGCL session.

The call is: EXIT

5.2 Getting Help

The HELP command activates a menu for getting help.

The call is: HELP

5.3 Including DISGCL Files

A DISGCL file can be included into another DISGCL file or DISGCL session with the statement

```
INCLUDE 'file[.gcl]'
```

Notes:

- Up to 8 include files can be nested.
- DISGCL searches the current working directory for the filename. If the search fails, DISGCL searches the directory defined by the environment variable GCL_PATH.

5.4 Listing Variables

The command LIST list all defined variables.

The call is: LIST [option] [v1, v2, ... vn]

option can have the values -s and -u. If -s is used, only system variables are listed, if -u is used, only user-defined variables are listed.

v1, v2, ..., vn are the names of variables. If no variables are specified, all defined variables are listed.

5.5 Freeing Variables

The command `FREE` deallocates the space allocated by arrays and strings.

The call is: `FREE v1, v2, ..., vn`

`v1, v2, ..., vn` are the names of variables.

5.6 The PRINT Command

The command `PRINT` prints the value of an expression on the screen.

The call is: `PRINT expr1, expr2, ..., exprn`

`expr1, expr2, ..., exprn` are expressions.

5.7 Logging Commands

The command `LOGON` defines a file where interactive commands will be logged.

The call is: `LOGON cfil`

`cfil` is a string containing a filename.

Notes:

- Logging can be terminated with the command `LOGOFF`.
- A log file can be executed with the `DISGCL` command, or can be included into a `DISGCL` session with the `INCLUDE` statement.
- If the file `cfil` already exists, a new file version will be created.

5.8 Creating Arrays

The commands `BYTE`, `CHAR`, `INT`, `SHORT`, `FLOAT`, `DOUBLE` and `COMPLEX` create corresponding arrays and initialize them with zeros.

The call is: `FLOAT list`

`list` is a list of arrays with dimension specifications separated by commas.

Example: `FLOAT A[10], B[5, 10]` creates an array `A` with 10 elements and a matrix `B` with 5 rows and 10 columns.

Chapter 6

User-defined Subroutines and Functions

User-defined subroutines and functions can be used to break large DISGCL tasks into several parts. Subroutines and functions offer some advantages:

- They use local variables and labels that are not visible to other parts of the DISGCL task.
- They make debugging easier. Once the subroutine or function is tested, it can be used in many other DISGCL runs.
- They eliminate repetition of code.

Each user-defined subroutine or function must be stored in a file with the extension '.gcl' where the name of the file and the name of the routine must be identical. The first statement in the file must be the identifier '%GCL'. The next non-comment statement in the file should be either the SUBROUTINE or the FUNCTION statement. Functions and subroutines are terminated with the first END statement that should be the last statement in the file.

6.1 Calling User-defined Subroutines

The CALL statement executes a user-defined subroutine. The syntax is:

CALL routine (list)

where

routine is the name of the subroutine.

list are the actual parameters of the subroutine separated by commas.

DISGCL adds the extension '.gcl' to the name of the subroutine and searches the current directory for the filename. If the search fails, DISGCL searches the directory defined by the environment variable GCL_PATH.

6.2 Calling User-defined Functions

A user-defined function is called in the same way as a DISLIN and DISGCL function. The syntax is:

v = function (list)

where

function is the name of the function.

list are the parameters of the function separated by commas.

The search order for functions is:

1. DISLIN functions.
2. DISGCL functions.
3. User-defined functions.

If the search for a DISLIN and DISGCL function fails, DISGCL adds the extension '.gcl' to the name of the function and searches the current directory for the filename. If the search also fails, DISGCL searches the directory defined by the environment variable GCL_PATH.

6.3 The SUBROUTINE Statement

The SUBROUTINE statement must be the first non-comment statement in a user-defined subroutine (after the identifier '%GCL'). It has the syntax:

SUBROUTINE routine (list)

where

routine is the name of the subroutine.

list are the formal parameters of the subroutine separated by commas.

6.4 The FUNCTION Statement

The FUNCTION statement must be the first non-comment statement in a user-defined function (after the identifier '%GCL'). It has the syntax:

FUNCTION function (list)

where

function is the name of the function.

list are the formal parameters of the function separated by commas.

6.5 The EXTERN Statement

The EXTERN statement can be used to access variables of the main DISGCL unit. These are variables that are defined outside of functions and subroutines. The syntax is:

EXTERN v1, v2, ..., vn

where v1, v2, ..., vn are the names of variables.

6.6 The RETURN Statement

The RETURN statement can be used to exit a subroutine and must be used in a function to return a value. The syntax is:

RETURN for subroutines.

RETURN expr for functions.

6.7 Parameters

Variables and expressions can be passed as parameters to user-defined functions and subroutines. Parameters in the CALL statement of a subroutine or in the function reference are called actual parameters. Formal parameters are the parameters declared in the SUBROUTINE or FUNCTION statement.

A formal parameter has the syntax:

[type:][key=]name

where

type	is an optional type declaration of the parameter. It can have the keywords BYTE, CHAR, SHORT, INT, FLOAT, DOUBLE, COMPLEX and STRING. If a type declaration is specified, DISGCL compares automatically the type of actual and formal parameters.
key	is an optional keyword for the parameter that identifies which parameter is being passed.
name	is the formal name of the parameter. The name of the parameter can have a dimension specification that means that the actual parameter must be an array.

Example:

```
SUBROUTINE MYSUB (FLOAT: A, INT: N, FLOAT: DATA=X[])
```

An actual parameter has the syntax:

[key=]expr

where

key	is an optional keyword for the parameter.
expr	is an expression.

Example:

```
CALL MYSUB (3., 10, DATA=XRAY)
```

Notes:

- The number of actual parameters can be lower than the number of formal parameters. The function ARGCNT() returns the total number of parameters passed to a subroutine or function. The function KEYCNT () returns the number of keyword parameters passed to a subroutine or function. The functions VARDEF (x), VARTYP (x), VARCNT (x) and VARDIM (x, n) can be used to analyse passed parameters (see Appendix A).
- If the number of actual parameters is greater than the number of formal parameters, or a keyword is used that is not defined in the formal parameter list, DISGCL displays a warning and ignores the routine call.

Chapter 7

Quickplots

This chapter presents quickplots that are collections of DISLIN routines to display data with one command.

The following rules are applied to quickplots:

- Quickplots call DISINI automatically if it is not called before. METAFL ('XWIN') will be used in quickplots if METAFL is not used before.
- On X Window terminals, there are no calls to ENDGRF and DISFIN in quickplots, they let DISLIN in level 2 or 3. If the variable %ERASE is set to 0, following quickplots will overwrite the graphics window without erasing the window.
- On other terminals such as VGA screens, quickplots are terminated with DISFIN to get back to the text mode.

Note:

All quickplots have corresponding widget interfaces that can be executed with the command
`gcl quickplot`

where quickplot is the name of a quickplot. The widget interfaces for quickplots expect data in the form of data files described in chapter 8, 'Data Files'.

7.1 The PLOT Command

The command PLOT makes a quickplot of two or more floating point arrays.

The call is: `PLOT xray1, yray1 [,xray2, yray2, ... , xrayn, yrayn]`

`xray1, yray1` are floating point arrays.

Example: `x = faloc (100)`
`plot x, sin (x), x, cos (x)`

7.2 The SCATTR Command

The command SCATTR makes a quickplot of two or more floating point arrays where the points are marked with symbols.

The call is: `SCATTR xray1, yray1 [,xray2, yray2, ... , xrayn, yrayn]`

`xray1, yray1` are floating point arrays.

7.3 The PLOT3 Command

The command PLOT3 makes a 3-D colour plot.

The call is: PLOT3 xray, yray, zray
xray, yray, zray are floating point arrays containing X-, Y- and Z-coordinates.

7.4 The PLOT3R Command

The command PLOT3R makes a 3-D colour plot where the data are specified as rectangles.

The call is: PLOT3R x1ray, y1ray, x2ray, y2ray, zray
x1ray, y1ray are floating point arrays containing X- and Y- coordinates of rectangle corners.
x2ray, y2ray are floating point arrays containing the opposite rectangle corners.
zray is a floating point array containing Z-coordinates.

7.5 The SURF3 Command

The command SURF3 makes a 3-D colour plot of a matrix. The columns of the matrix will be plotted as rows.

The call is: SURF3 zmat [,xray [, yray]]
zmat is a two-dimensional floating point array with m rows and n columns.
xray is a floating point array with the dimension m. It will be used to position the rows of zmat. If xray is missing, an array with the values { 0.5, 1.5, ..., m - 0.5 } will be used.
yray is a floating point array with the dimension n. It will be used to position the columns of zmat. If yray is missing, an array with the values { 0.5, 1.5, ..., n - 0.5 } will be used.

7.6 The SURFACE Command

The command SURFACE makes a surface plot of a matrix.

The call is: SURFACE zmat [,xray, yray]
zmat is a two-dimensional floating point array with nx rows and ny columns.
xray is a floating point array with the dimension nx. It will be used to position the rows of zmat. If xray is missing, an array with the values { 0., 1., ..., nx - 1. } will be used.
yray is a floating point array with the dimension ny. It will be used to position the columns of zmat. If yray is missing, an array with the values { 0., 1., ..., ny - 1. } will be used.

7.7 The SURSHADE Command

The command SURSHADE makes a shaded surface plot of a matrix.

The call is: SURSHADE zmat [,xray, yray]
zmat is a two-dimensional floating point array with nx rows and ny columns.
xray is a floating point array with the dimension nx. It will be used to position the rows of zmat. If xray is missing, an array with the values { 0., 1., ..., nx - 1. } will be used.
yray is a floating point array with the dimension ny. It will be used to position the columns of zmat. If yray is missing, an array with the values { 0., 1., ..., ny - 1. } will be used.

7.8 The CONTOUR Command

The command CONTOUR makes a contour plot of a matrix.

The call is: CONTOUR zmat [,xray, yray, zlvray]

 or: CONTOUR zmat, zlvray

zmat is a two-dimensional floating point array with nx rows and ny columns.

xray is a floating point array with the dimension nx. It will be used to position the rows of zmat. If xray is missing, an array with the values { 0., 1., ..., nx - 1.} will be used.

yray is a floating point array with the dimension ny. It will be used to position the columns of zmat. If yray is missing, an array with the values { 0., 1., ..., ny - 1.} will be used.

zlvray is a floating point array containing the levels. If zlvray is missing, 10 levels between the minimum and maximum of zmat will be generated.

7.9 The CONSHADE Command

The command CONSHADE makes a shaded contour plot of a matrix.

The call is: CONSHADE zmat [,xray, yray, zlvray]

 or: CONSHADE zmat, zlvray

zmat is a two-dimensional floating point array with nx rows and ny columns.

xray is a floating point array with the dimension nx. It will be used to position the rows of zmat. If xray is missing, an array with the values { 0., 1., ..., nx - 1.} will be used.

yray is a floating point array with the dimension ny. It will be used to position the columns of zmat. If yray is missing, an array with the values { 0., 1., ..., ny - 1.} will be used.

zlvray is a floating point array containing the levels. If zlvray is missing, 10 levels between the minimum and maximum of zmat will be generated.

7.10 Scaling of Quickplots

Normally, quickplots are scaled automatically in the range of the data. This behaviour can be changed if certain variables are defined.

The variables for the X-axis are:

- a) If the system variables %XMIN and %XMAX are defined, the X-axis will be scaled automatically in the range %XMIN, %XMAX.
- b) If the system variables %XMIN, %XMAX, %XOR and %XSTEP are defined, the scaling and labeling of the X-axis is completely defined by the user.
- c) If the system variable %XAUTO is defined and set to 1, the variables %XMIN, %XMAX, %XOR and %XSTEP will be ignored and scaling will be done automatically in the range of the data.

Analog: Y-axis, Z-axis.

Note: For logarithmic scaling, the parameters must be exponents of base 10.

7.11 Quickplot Variables

There is a set of variables that can modify the appearance of quickplots. The corresponding DISLIN routines are given in parenthesis.

%X	defines the X-axis title (NAME).
%Y	defines the Y-axis title (NAME).
%Z	defines the Z-axis title (NAME).
%T1	defines line 1 of the axis system title (TITLIN).
%T2	defines line 2 of the axis system title (TITLIN).
%T3	defines line 3 of the axis system title (TITLIN).
%T4	defines line 4 of the axis system title (TITLIN).
%XTIC	sets the number of ticks for the X-axis (TICKS).
%YTIC	sets the number of ticks for the Y-axis (TICKS).
%ZTIC	sets the number of ticks for the Z-axis (TICKS).
%XDIG	sets the number of digits for the X-axis (LABDIG).
%YDIG	sets the number of digits for the Y-axis (LABDIG).
%ZDIG	sets the number of digits for the Z-axis (LABDIG).
%XSCL	defines the scaling of the X-axis (AXSSCL).
%YSCL	defines the scaling of the Y-axis (AXSSCL).
%ZSCL	defines the scaling of the Z-axis (AXSSCL).
%XLAB	defines the labels of the X-axis (LABELS).
%YLAB	defines the labels of the Y-axis (LABELS).
%ZLAB	defines the labels of the Z-axis (LABELS).
%H	defines the character size (HEIGHT).
%HNAME	defines the size of axis titles (HNAME).
%HTITLE	defines the size of the axis system title (HTITLE).
%XPOS	defines the X-Position of the axis system (AXSPOS).
%YPOS	defines the Y-Position of the axis system (AXSPOS).
%XLEN	defines the size of an axis system in X-direction (AXSLEN).
%YLEN	defines the size of an axis system in Y-direction (AXSLEN).
%ZLEN	defines the size of an axis system in Z-direction (AX3LEN).
%POLCRV	defines an interpolation method used by CURVE (POLCRV).
%INCMRK	defines line or symbol mode for CURVE (INCMRK).
%MARKER	selects a symbol for CURVE (MARKER).
%HSYMBL	defines the size of symbols (HSYMBL).
%XRES	sets the width of points plotted by PLOT3 (SETRES).

<code>%YRES</code>	sets the height of points plotted by PLOT3 (SETRES).
<code>%X3VIEW</code>	sets the X-position of the viewpoint in absolut 3-D coordinates (VIEW3D).
<code>%Y3VIEW</code>	sets the Y-position of the viewpoint in absolut 3-D coordinates (VIEW3D).
<code>%Z3VIEW</code>	sets the Z-position of the viewpoint in absolut 3-D coordinates (VIEW3D).
<code>%X3LEN</code>	defines the X-axis length of the 3-D box (AXIS3D).
<code>%Y3LEN</code>	defines the Y-axis length of the 3-D box (AXIS3D).
<code>%Z3LEN</code>	defines the Z-axis length of the 3-D box (AXIS3D).
<code>%VTITLE</code>	defines vertical shifting for the axis system title (VKYTIT).
<code>%CONSHD</code>	selects an algorithm used for contour filling (SHDMOD).

Note: The variables can also be used, to initalize plotting parameters in DISINI.

Example:

```

%X = 'X-axis'
%Y = 'Y-axis'
xray = faloc (10)
plot xray, xray

```


Chapter 8

Data Files

This chapter describes data files that can be used to include data into DISGCL jobs. The format of data files is very simple and useful for most DISLIN plotting routines.

8.1 Syntax of Data Files

- A data file must begin with the keyword '%GCL-ASC'.
- Each line may contain up to 512 characters.
- Lines are allowed to carry trailing comment fields, following a double slash (/). Empty lines are also be interpreted as comment lines.
- A data file can contain an optional header beginning with the keyword %HEADER. Variables can be defined in the header in the form name = value, where value is an integer, a floating point number or a string. Strings must be enclosed in a pair of either apostrophes or quotation marks.
- A data field begins with the keyword %DATA. The first non comment line after %DATA must contain the number of columns of the data field. The following lines give the data separated by blanks or commas. Data can be specified as integer or floating point numbers where floating point numbers can contain an exponent part.
- Multiple data blocks can be given in one data file.

8.2 Data File Routines

The following routines handle data files.

D A T F I L

The routine DATFIL opens a file for data input.

The call is: ISTAT = DATFIL (CFIL)

CFIL is the name of the data file. The default extension is '.gdf' (Graphics Data File). DATFIL returns -1 if it fails, or zero.

Note: DISGCL searches the current working directory for the data file. If the search fails, DISGCL searches the directory defined by the environment variable GCL_DATA.

D A T C L S

The routine DATCLS closes the current data file. It returns -1 if it fails, or zero.

The call is: ISTAT = DATCLS ()

D A T H D R

The routine DATHDR prints the header of a data file on the screen.

The call is: ISTAT = DATHDR ()

ISTAT is the returned status of DATHDR and can have the values 0 and -1. On error, DATHDR returns -1.

D A T V A R

The routine DATVAR returns the value of a variable defined in the header of a data file.

The call is: V = DATVAR (CNAME)

CNAME is the name of the variable.

V is the returned value of the variable. The first occurrence of the variable is returned.

D A T C N T

The routine DATCNT returns the number of data of the current data block in a data file.

The call is: N = DATCNT (COPT)

COPT is a string with the values

= 'ROWS' means the number of rows in the current data block.

= 'COLUMNS' means the number of columns in the current data block.

= 'FULL' means the number of data in the current data block.

= 'BLOCKS' means the number of blocks in the data file.

D A T R A Y

The routine DATRAY creates an array containing a column of the current data block in a data file.

The call is: XRAY = DATRAY (NCOLUMN)

NCOLUMN defines the column of the data file.

XRAY is a returned floating point array.

D A T M A T

The routine DATMAT creates an array containing the whole current data block of the data file.

The call is: XMAT = DATMAT ()

XMAT is a returned twodimensional floating point array.

D A T B L K

The routine DATBLK sets the current data block of a data file.

The call is: ISTAT = DATBLK (NBLOCK)

NBLOCK specifies the current data block. DATBLK returns 0 if the data block NBLOCK is defined, and -1 if NBLOCK is not defined in the current data file.

8.3 Example

```
%GCL-ASC
%DATA
3          // Number of columns
//  x      sin(x)   cos(x)
0.000000  0.000000  1.000000
14.545455 0.251148  0.967949
29.090910 0.486197  0.873849
43.636364 0.690079  0.723734
58.181820 0.849725  0.527225
72.727272 0.954902  0.296920
87.272728 0.998867  0.047582
101.818184 0.978802 -0.204807
116.363640 0.895994 -0.444067
130.909088 0.755750 -0.654861
145.454544 0.567060 -0.823677
160.000000 0.342020 -0.939693
174.545456 0.095056 -0.995472
189.090912 -0.158001 -0.987439
203.636368 -0.400931 -0.916108
218.181824 -0.618159 -0.786053
232.727280 -0.795762 -0.605610
247.272720 -0.922354 -0.386345
261.818176 -0.989821 -0.142315
276.363647 -0.993838  0.110838
290.909088 -0.934148  0.356886
305.454559 -0.814576  0.580057
320.000000 -0.642788  0.766044
334.545441 -0.429795  0.902926
349.090912 -0.189251  0.981929
360.000000 -0.000000  1.000000
```


Chapter 9

Input and Output

This chapter describes functions that write formatted data to the screen and access disk files.

9.1 Formatted Output with PRINTF

The function PRINTF translates internal values and prints them on the screen.

The call is: ISTAT = PRINTF (CFMT, ARG1, ARG2, ..., ARGn)

CFMT is a format string.

ARG1,...,ARGn are optional arguments.

ISTAT is the returned status of PRINTF and can have the values 0 and -1. On error, PRINTF returns -1.

The format string can contain ordinary characters and format specifications. Ordinary characters are printed as text while format specifications define how the arguments of PRINTF are formatted. A format specification begins with a % and ends with a conversion character. Between the % and the conversion character there may be the following parts:

- A minus sign, which specifies left adjustment.
- A number that specifies the minimum field length.
- A period, which separates the field width from the precision.
- A number that specifies the precision. It defines the number of printed characters from a string, or the number of digits after the decimal point of floating point values.

Conversion characters are shown in the following table:

Character	Meaning
<code>%c</code>	prints a character.
<code>%d</code>	prints an integer.
<code>%i</code>	prints an integer (same as <code>%d</code>).
<code>%s</code>	prints a string.
<code>%f</code>	prints a floating point number.
<code>%e</code>	prints a floating point number in e format.
<code>%x</code>	prints an integer in hexadecimal format.
<code>%o</code>	prints an integer in octal format.
<code>\n</code>	inserts a newline.

Figure 9.1: Conversion Characters

Examples:

The first example shows the effect of some format specifications for printing the string 'This is a string.' (17 characters).

```
%GCL

s = 'This is a string.'
printf (':%s:      \n', s)
printf (':%15s:    \n', s)
printf (':%17s:    \n', s)
printf (':%20s:    \n', s)
printf (':% -20s:  \n', s)
printf (':%17.13s: \n', s)
printf (':% -17.13s:\n', s)
```

The output of the DISGCL script is:

```
:This is a string.:
:This is a string.:
:This is a string.:
:  This is a string.:
:This is a string.  :
:  This is a str:
:This is a str    :
```

The next example shows the effect of some format specifications for printing the integer 254:

```
%GCL

i = 254
printf (':%d: \n', i)
printf (':%8d: \n', i)
printf (':%08d: \n', i)
printf (':%-8d: \n', i)
printf (':%-8.2d:\n', i)
printf (':%x: \n', i)
printf (':%08X: \n', i)
printf (':%o: \n', i)
```

The output is:

```
:254:
:    254:
:00000254:
:254    :
:254    :
:fe:
:000000FE:
:376:
```

The next example shows the effect of some format specifications for printing the floating point number 123.456:

```
%GCL

x = 123.456
printf (':%f: \n', x)
printf (':%15f: \n', x)
printf (':%-15f: \n', x)
printf (':%-15.2f: \n', x)
printf (':%e: \n', x)
printf (':%-15E: \n', x)
printf (':%-15.2E: \n', x)
```

The output is:

```
:123.456000:
:    123.456000:
:123.456000  :
:123.46      :
:1.234560e+02:
:1.234560E+02 :
:1.23E+02    :
```

9.2 Formatted Output with SPRINTF

The function SPRINTF does the same conversions as PRINTF does, but stores the output in a character array.

The call is: `ISTAT = SPRINTF (CRAY, CFMT, ARG1, ARG2, ..., ARGn)`

`CRAY` is a character array that must be created with the `CHAR` command. `CRAY` must be big enough to hold the result and the string terminator.

`CFMT` is a format string.

`ARG1,...,ARGn` are optional arguments.

`ISTAT` is the returned status of `SPRINTF` and can have the values 0 and -1. On error, `SPRINTF` returns -1.

9.3 Formatted Input with SCANF

The function `SCANF` is an analog function to `PRINTF` for formatted input from the keyboard. It uses the format specifications listed in table 9.1.

The call is: `ISTAT = SCANF (CFMT, ARG1, ARG2, ..., ARGn)`

`CFMT` is a format string.

`ARG1,...,ARGn` are optional arguments where the arguments must be variables. If a string should be read, the corresponding variable must be created with the `DISGCL` command `CHAR` and big enough to hold the string and a trailing string terminator.

`ISTAT` is the returned status of `SCANF` and can have the values 0 and -1. On error, `SCANF` returns -1.

Note:

`SCANF` cannot be used in the interactive mode of `DISGCL`.

9.4 Formatted Input with SSCANF

The function `SSCANF` does the same conversions as `SCANF` does, but reads the input from a string.

The call is: `ISTAT = SSCANF (CSTR, CFMT, ARG1, ARG2, ..., ARGn)`

`CSTR` is a string where the input characters are taken from.

`CFMT` is a format string.

`ARG1,...,ARGn` are optional arguments (see `SCANF`).

`ISTAT` is the returned status of `SSCANF` and can have the values 0 and -1. On error, `SSCANF` returns -1.

9.5 File Access

The following functions deal with operations on files.

F O P E N

The routine FOPEN opens a file and returns a file unit.

The call is: NU = FOPEN (CFIL, CMOD)

CFIL is the name of a file. If CFIL = 'CON:', the console is opened for file I/O. If DISGCL is used in interactive mode, the console can only be opened for output (CMOD = 'w').

CMOD is a string that defines the mode for file access. The modes are listed in table 9.2.

NU is the returned file unit, or -1 if an error occurs.

The following table shows the allowed file modes for FOPEN:

Mode	Meaning
'r'	opens a text file for reading. The file must exist, or an error message is printed.
'w'	opens a text file for writing. The contents of an existing file will be overwritten.
'a'	opens a text file for appending.
'rb'	opens a file for binary reading.
'wb'	opens a file for binary writing.
'ab'	opens a file for binary appending.

Figure 9.2: File Modes for FOPEN

F C L O S E

The function FCLOSE closes a file.

The call is: ISTAT = FCLOSE (NU)

NU is a file unit.

ISTAT is the returned status of FCLOSE and can have the values 0 and -1. On error, FCLOSE returns -1.

R E M O V E

The function REMOVE deletes a file.

The call is: ISTAT = REMOVE (CFIL)

CFIL is the name of a file.

ISTAT is the returned status of REMOVE and can have the values 0 and -1. On error, REMOVE returns -1.

R E N A M E

The function RENAME changes the name of a file.

The call is: ISTAT = RENAME (COLD, CNEW)

COLD is the old name of the file.

CNEW is the new name of the file.

ISTAT is the returned status of RENAME and can have the values 0 and -1. On error, RENAME returns -1.

F T E L L

The function FTELL returns the current file position.

The call is: NPOS = FTELL (NU)

NU is a file unit.

NPOS is the returned file position, or -1 on error.

F S E E K

The function FSEEK defines the current file position.

The call is: ISTAT = FSEEK (NU, NPOS)

NU is a file unit.

NPOS is the new file position.

ISTAT is the returned status of FSEEK and can have the values 0 and -1. On error, FSEEK returns -1.

F F L U S H

The function FFLUSH flushes any output buffers. For input, FFLUSH has no effect.

The call is: ISTAT = FFLUSH (NU)

NU is a file unit.

ISTAT is the returned status of FFLUSH and can have the values 0 and -1. On error, FFLUSH returns -1.

R E W I N D

The function REWIND sets the current file position to the beginning of the file.

The call is: ISTAT = REWIND (NU)

NU is a file unit.

ISTAT is the returned status of REWIND and can have the values 0 and -1. On error, REWIND returns -1.

9.6 Formatted Output to Files

FPRINTF

The function FPRINTF does the same conversions as PRINTF does, but writes the output to a file.

The call is: ISTAT = FPRINTF (NU, CFMT, ARG1, ARG2, ..., ARGn)

NU is a file unit.

CFMT is a format string.

ARG1,...,ARGn are optional arguments.

ISTAT is the returned status of FPRINTF and can have the values 0 and -1. On error, FPRINTF returns -1.

9.7 Formatted Input from Files

FSCANF

The function FSCANF is an analog function to FPRINTF for formatted input. It uses the format specifications listed in table 9.1.

The call is: ISTAT = FSCANF (NU, CFMT, ARG1, ARG2, ..., ARGn)

NU is a file unit.

CFMT is a format string.

ARG1,...,ARGn are optional arguments where the arguments must be variables. If a string should be read from the file, the corresponding variable must be created with the DISGCL command CHAR and big enough to hold the string and the trailing string terminator.

ISTAT is the returned status of FSCANF and can have the values 0 and -1. On error, FSCANF returns -1.

9.8 Text Input and Output Functions

FGETC

The function FGETC returns the next character from a file.

The call is: N = FGETC (NU)

NU is a file unit.

N is the ASCII code of the returned character, or -1 if end of file or error occurs.

FGETS

The function FGETS reads at most N-1 characters into a character array, stopping if a newline is encountered. The newline character is included in the character array.

The call is: ISTAT = FGETS (CRAY, N, NU)

CRAY	is a character array filled by FGETS. CRAY must be created with the DISGCL command CHAR (i.e. CHAR CRAY[N]).
N	defines the number of characters to be read. At most N-1 characters will be read.
NU	is a file unit.
ISTAT	is the returned status of FGETS and can have the values 0 and -1. FGETS returns -1 if end of file or error occurs.

Note:

The function GETS (CRAY) reads the next input line into the character array CRAY; it replaces the terminating newline with '\0'.

FPUTC

The function FPUTC writes a character to a file.

The call is: ISTAT = FPUTC (N, NU)

N	is the ASCII code of a character that should be written to a file.
NU	is a file unit.
ISTAT	is the returned status of FPUTC and can have the values 0 and -1. On error, FPUTC returns -1.

FPUTS

The function FPUTS writes a string to a file.

The call is: ISTAT = FPUTS (CSTR, NU)

CSTR	is a string that should be written to the file. A newline character is not inserted after the string.
NU	is a file unit.
ISTAT	is the returned status of FPUTS and can have the values 0 and -1. On error, FPUTS returns -1.

Note:

The function PUTS (CSTR) prints the string CSTR and a newline on the console.

9.9 Binary Input and Output Functions

FREAD

The function FREAD reads binary data from a file.

The call is: NRET = FREAD (VRAY, N, NU)

VRAY	is an array where the binary data should be filled in.
N	is the number of array elements that should be filled with data.
NU	is a file unit.

NRET is the number of elements read, or -1 if end of file or error occurs.

FWRITE

The function FWRITE writes binary data to a file.

The call is: NRET = FWRITE (VRAY, N, NU)

VRAY is an array containing the data that should be written to the file.

N is the number of array elements that should be written to the file.

NU is a file unit.

NRET is the number of elements written, or -1 if error occurs.

9.10 Example

The following example copies a text files and converts it to uppercase letters.

```
%GCL
// Copies a file and converts it to uppercase letters

char cr[100], cinp[40], cout[40]

printf ('Inputfile: ')
gets (cinp)

printf ('Outputfile: ')
gets (cout)

inp = fopen (cinp, 'r')
if (inp == -1) exit
out = fopen (cout, 'w')
if (out == -1) exit

i = fgets (cr, 100, inp)
while (i != -1)
    s =strupr (cr)
    fputs (s, out)
    i = fgets (cr, 100, inp)
end while

fclose (inp)
fclose (out)
```

The example can be stored in a file and executed with the command:

`disgcl filename`

Appendix A

Intrinsic Functions

This appendix is a summary of the DISGCL intrinsic functions.

A.1 Mathematical Functions

Function	Meaning
ABS (x)	absolute value $ x $.
ACOS (x)	$\cos(x)^{-1}$ in the range $[0, \pi]$, $-1 \leq x \leq 1$.
ASIN (x)	$\sin(x)^{-1}$ in the range $[0, \pi]$, $-1 \leq x \leq 1$.
ATAN (x)	$\tan(x)^{-1}$ in the range $[-\pi/2, \pi/2]$.
ATAN2 (y, x)	$\tan(y/x)^{-1}$ in the range $[-\pi, \pi]$.
CEIL (x)	smallest integer not less than x, as a double.
COS (x)	cosine of x.
COSH (x)	hyperbolic cosine of x.
EXP (x)	exponential function e^x .
FLOOR (x)	largest integer not greater than x, as a double.
FMOD (x, y)	floating point remainder of x/y, with the same sign as x. FMOD returns zero if y is zero.
LOG (x)	natural logarithm $\ln(x)$, $x > 0$.
LOG10 (x)	base 10 logarithm, $x > 0$.
SIN (x)	sine of x.
SINH (x)	hyperbolic sine of x.
SQRT (x)	\sqrt{x} , $x \geq 0$.
TAN (x)	tangent of x.
TANH (x)	hyperbolic tangent of x.

Figure A.1: Mathematical Functions

Note:

Normally, the parameter x in a mathematical function can be a scalar or an array expression, and may be real or complex. If x is a scalar expression, the returned value of a mathematical function has the type `DOUBLE` or `COMPLEX`. If x is an array expression of types `FLOAT`, `DOUBLE` or `COMPLEX`, the returned value is also a `FLOAT`, `DOUBLE` or `COMPLEX` array. If x is an array expression of type `INT`, the returned value is a `FLOAT` array.

A.2 Type Conversion Functions

Function	Meaning
<code>ATONUM (s)</code>	converts a string to a number.
<code>BYTE (x)</code>	converts x to <code>BYTE</code> .
<code>CHAR (x)</code>	converts x to <code>CHAR</code> .
<code>COMPLEX (x, y)</code>	converts to <code>COMPLEX</code> . x is converted to the real, y is converted to the imaginary part.
<code>DOUBLE (x)</code>	converts x to <code>DOUBLE</code> .
<code>FLOAT (x)</code>	converts x to <code>FLOAT</code> . If x is a complex number, <code>FLOAT</code> returns the real part of x .
<code>INT (x)</code>	converts x to <code>INT</code> .
<code>NUMTOA (x, ndig)</code>	converts a number x to a string where $ndig$ is the number of decimal places plotted after the decimal point.
<code>SHORT (x)</code>	converts x to <code>SHORT</code> .
<code>STRING (x)</code>	converts x to <code>STRING</code> .

Figure A.2: Type Conversion Functions

A.3 Complex Functions

Function	Meaning
<code>ARG (z)</code>	returns the phase of z in radians.
<code>CONJG (z)</code>	returns the conjugate of the complex value z .
<code>IMAG (z)</code>	returns the imaginary part of z .

Figure A.3: Complex Functions

A.4 Array Functions

Function	Meaning
CATARR (a, b)	Concatenates two arrays.
MAXARR (a)	Returns the maximum of an array a.
MINARR (a)	Returns the minimum of an array a.
SUBARR (a, i1, n)	Creates a subarray from the array a. i1 is the first index, n the number of elements of a.
SUBMAT (a, idx)	Creates a submatrix from certain columns of the two-dimensional array a. idx is an integer array containing column numbers in the range 0 to n-1 where n is the number of columns in a.
TRPMAT (a)	Exchanges rows and columns of a matrix a.

Figure A.4: Array Functions

A.5 Variable and Parameter Functions

Function	Meaning
ARGCNT ()	returns the total number of parameters passed to a user-defined subroutine or function.
KEYCNT ()	returns the number of keyword parameters passed to a user-defined subroutine or function.
VARCNT (v)	returns the number of elements of a variable v, or -1 if v is not defined.
VARDEF (v)	returns 1 if the variable v is defined, and 0 if v is not defined.
VARDIM (v, n)	returns the n-th dimension of a variable v. If the dimension is not defined, VARDIM returns zero.
VARTYP (v)	returns the data type of the variable v, or the string 'UNDEF' if v is not defined. The returned type can have the value 'BYTE', 'INT', 'FLOAT' or 'DOUBLE'.

Figure A.5: Variable and Parameter Functions

A.6 Data File Functions

Function	Meaning
DATBLK (n)	defines the current data block. It returns -1 if the data block n is not defined.
DATCNT (copt)	returns the number of data in the current data block. copt can have the values 'ROWS', 'COLUMNS', 'FULL' and 'BLOCKS'.
DATFIL (s)	defines the data file. It returns -1 if it fails.
DATHDR ()	prints the header of a data file on the screen. DATHDR returns -1 if it fails.
DATMAT ()	returns an array containing the whole current data block.
DATRAY (ncolumn)	returns an array containing a column of the current data block.
DATVAR (cname)	returns the value of a variable defined in the header of a data file.

Figure A.6: Data File Functions

A.7 Memory Allocating Functions

Function	Meaning
DALLOC (n)	creates a double array and initializes it with {0., 1.,, n-1.}.
FALLOC (n)	creates a floating point array and initializes it with {0., 1.,, n-1.}.
IALLOC (n)	creates an integer array and initializes it with {0, 1,, n-1}.

Figure A.7: Memory Allocating Functions

A.8 String Functions

Function	Meaning
STRLEN (s)	returns the length of a string.
STRLWR (s)	returns a string converted to lowercase letters.
STRREP (s, n)	returns n copies of the string s.
STRSTR (s1, s2)	returns the first occurrence of string s2 in string s1, or -1 if not present.
STRUPR (s)	returns a string converted to uppercase letters.
SUBSTR (s, i1, n)	returns a substring of s where i1 is the starting index and n the number of characters of s.
TRMLEN (s)	returns the length of a string without trailing blanks.

Figure A.8: String Functions

A.9 File Functions

Function	Meaning
FCLOSE (nu)	closes the file with the unit nu. It returns -1 on error.
FFLUSH (nu)	flushes any output buffers.
FOPEN (cfile, cmode)	opens a file and returns a file unit, or -1 if the open fails.
FSEEK (nu, npos)	sets the current file position. It returns -1 on error.
FTELL (nu)	returns the current file position, or -1 on error.
INQUIRE (cfile)	tests if a file exists. It returns 0 on error, otherwise 1.
REMOVE (cfile)	deletes a file. It returns -1 if the attempt fails.
RENAME (cold, cnew)	changes the name of a file. It returns -1 if the attempt fails.
REWIND (nu)	rewinds the file with the unit nu. It returns -1 if any errors occurred.

Figure A.9: File Functions

A.10 Input and Output Functions

Function	Meaning
FGETC (nu)	returns the next character from a file. FGETC returns -1 if end of file or error occurs.
FGETS (cbuf, n, nu)	reads at most n-1 characters into the array cbuf, stopping if a newline is encountered; The newline is included in the array. FGETS returns -1 if end of file or error occurs.
FPRINTF (nu, s, vlist)	writes formatted output to a file connected to the unit nu.
FPUTC (i, nu)	writes the character with the ASCII value i to a file. FPUTC returns 0 if successful, or -1 if an error occurs.
FPUTS (cbuf, nu)	writes the string cbuf to a file. FPUTS returns -1 if an error occurs.
FREAD (a, n, nu)	reads from a file n elements into the array a. FREAD returns the number of elements read, or -1 if an error occurs.
FSCANF (nu, s, vlist)	reads formatted input from a file connected to the unit nu.
FWRITE (a, n, nu)	writes from the array a n elements to the file with the unit nu. FWRITE returns the number of elements written, or -1 if an error occurs.
GETS (cbuf)	reads the next input line into the character array cbuf. The newline not is included in the array. GETS returns -1 if an error occurs.
PUTS (cbuf)	prints the string cbuf on the screen. A newline is printed after the string. PUTS returns -1 if an error occurs.
PRINTF (s , vlist)	writes formatted output to the terminal.
SCANF (s, vlist)	reads formatted input from the console.
SPRINTF (cr, s, vlist)	writes formatted output to a character array.
SSCANF (s1, s2, vlist)	reads formatted input from a string.

Figure A.10: Input/Output Functions

A.11 System Functions

Function	Meaning
GETENV (cenv)	returns the environment string associated with cenv, or blank if no string exists.
GETPID ()	returns the process ID of the DISGCL executable.
SYSTEM (cmd)	executes the system command cmd where cmd is a character variable. SYSTEM returns -1 if it fails.

Figure A.11: System Functions

A.12 Time Functions

Function	Meaning
CLOCK ()	returns the processor time in seconds used by the DISGCL session since the last call of CLOCK. At the first time, CLOCK returns 0.
DATE ()	returns a string containing the date in the format dd.mm.yy
TIME ()	returns a string containing the time in the format hh:mm:ss.

Figure A.12: Time Functions

A.13 Random Number Functions

Function	Meaning
RAND ()	returns a random number in the range from 0 to 1.
SRAND (iseed)	sets the seed for rand. It resets the random-number generator to a random starting point. The generator is initially seeded with a value of 1.

Figure A.13: Random Number Functions

Appendix B

Short Description of DISLIN Routines

This appendix presents a short description of all DISLIN routines that can be called from DISGCL. A complete description of the routines can be found in the DISLIN manual or via the online help of DISGCL. For parameters, the following conventions are used:

- integer variables begin with the character N or I
- strings begin with the character C
- other variables can be integers or floating point numbers.
- arrays end with the keyword 'ray'. Normally, INT and FLOAT arrays must be passed to DISLIN routines.

B.1 Initialization and Introductory Routines

Routine	Meaning
BMPMOD (n, cval, copt)	defines the physical resolution of BMP files.
BUFMOD (cmod, ckey)	modifies the behaviour of the output buffer.
CGMBGD (xr, xg, xb)	defines the background colour for CGM files.
CGMPIC (cstr)	sets the picture ID for CGM files.
DISENV (cenv)	defines the DISLIN environment.
DISINI ()	initializes DISLIN.
ERASE ()	clears the screen.
ERRDEV (cdev)	defines the error device.
ERRFIL (cfil)	sets the name of the error file.
ERRMOD (ckey, copt)	modifies the printing of error messages.
FILBOX (nx, ny, nw, nh)	defines the position and size of included metafiles.
FILMOD (cmode)	defines the file creation mode.
FILOPT (copt, ckey)	modifies rules for creating file versions.
iret = FILSIZ (cfil, nw, nh)	returns the size on an image file.
iret = FILTYP (ctype)	returns the type of a file.
FILWIN (nx, ny, nw, nh)	defines a rectangle of the image that will be included by INCFIL.
GIFMOD (cmod, ckey)	enables transparency for GIF files.
HPGMOD (cmod, ckey)	defines options for HPGL files.
HWORIG (nx, ny)	defines the origin of the PostScript hardware page.
HWPAGE (nw, nw)	defines the size of the PostScript hardware page.
HWSCAL (xscl)	modifies the scale operator in PostScript files.
IMGFMT (copt)	defines the format of image files.
INCFIL (cfil)	includes metafiles into a graphics.

Routine	Meaning
METAFL (cfmt)	defines the plotfile format.
NEWPAG ()	creates a new page.
ORIGIN (nx, ny)	defines the origin.
PAGE (nw, nh)	sets the page size.
PAGFLL (iclr)	fills the page with a colour.
PAGERA ()	plots a page border.
PAGHDR (c1, c2, iopt, idir)	plots a page header.
PAGMOD (copt)	selects a page rotation.
PAGORG (copt)	defines the origin of the page.
n = PDFBUF (cbuf, nmax)	copies a PDF file to a buffer.
PDFMOD (cmo, ckey)	defines PDF options.
PDFMRK (cstr, copt)	defines kookmarks for PDF files.
PNGMOD (cmo, ckey)	enables transparency for PNG files.
SCLFAC (x)	defines a scaling factor for the entire plot.
SCLMOD (copt)	defines a scaling mode.
SCRMOD (copt)	swaps back- and foreground colours.
SENDBF ()	flushes the output buffer.
SETFIL (cfl)	sets the plotfile name.
SETPAG (copt)	selects a predefined page format.
SETXID (id, copt)	defines an external X Window or pixmap.
SYMFIL (cdev, cstat)	sends a plotfile to a device.
TIFMOD (n, cval, copt)	defines the physical resolution of TIFF files.
UNIT (nu)	defines the logical unit for messages.
UNITS (copt)	defines the plot units.
WMFMOD (cmo, ckey)	modifies the format of WMF files.

Figure B.1: Initialization and Introductory Routines

B.2 Termination and Parameter Resetting

Routine	Meaning
DELGLB ()	frees space allocated for global parameters.
DISFIN ()	terminates DISLIN.
ENDGRF ()	terminates an axis system and sets the level to 1.
RESET (copt)	resets parameters to default values.

Figure B.2: Termination and Parameter Resetting

B.3 Plotting Text and Numbers

Routine	Meaning
ANGLE (n)	defines the character angle.
CHAANG (x)	defines an inclination angle for characters.
CHASPC (x)	affects character spacing.

Routine	Meaning
CHAWTH (x)	affects the width of characters.
FIXSPC (x)	sets a constant character width.
FRMESS (nfrm)	defines the thickness of text frames.
HEIGHT (n)	defines the character height.
MESSAG (cstr, nx, ny)	plots text.
MIXALF ()	enables control signs for plotting indices and exponents.
NEWMIX ()	defines an alternate set of control characters.
n = NLMESS (cstr)	returns the length of strings in plot coordinates.
NUMBER (x, ndig, nx, ny)	plots floating point numbers.
NUMFMT (copt)	determines the format of numbers.
NUMODE (c1, c2, c3, c4)	modifies the appearance of numbers.
RLMESS (cstr, x, y)	plots text for user coordinates.
RLNUMB (x, ndig, xp, yp)	plots numbers for user coordinates.
SETBAS (xfac)	determines the position of indices and exponents.
SETEXP (xfac)	sets height of indices and exponents.
SETMIX (char, cmix)	defines control signs for indices and exponents.
TEXMOD (cmode)	enables TeX mode for plotting mathematical formulas.
TEXOPT (copt, ctype)	defines TeX options.
TEXVAL (x, copt)	defines TeX values.
TXTBGD (nclr)	defines a background colour for text and numbers.
TXTJUS (copt)	defines the alignment of text and numbers.

Figure B.3: Plotting Text and Numbers

B.4 Colours

Routine	Meaning
COLOR (color)	defines the colour used for text and lines.
HSVRGB (xh, xs, xv, xr, xg, xb)	converts HSV to RGB coordinates.
n = INDRGB (xr, xg, xb)	calculates a colour index.
n = INTRGB (xr, xg, xb)	calculates an explicit colour value.
MYVLT (rray, gray, bray, n)	changes the current colour table.
RGBHSV (xr, xg, xb, xh, xs, xv)	converts RGB to HSV coordinates.
SETCLR (nclr)	defines colours.
SETIND (i, xr, xg, xb)	changes the current colour table.
SETRGB (xr, xg, xb)	defines colours.
SETVLT (cvlt)	selects a colour table.
VLTFIL (cfil, cmod)	stores or loads a colour table.

Figure B.4: Colours

B.5 Fonts

Routine	Meaning
BASALF (calph)	defines the base alphabet.
BMPFNT (cfont)	defines a bitmap font.
CHACOD (copt)	defines the character coding.
COMPLX ()	sets a complex font.
DUPLX ()	sets a double-stroke font.
DISALF ()	sets the default font.
EUSHFT (cnat, char)	defines a shift character for European characters.
GOTHIC ()	sets a gothic font.
HELVE ()	sets a shaded font.
HELVES ()	sets a shaded font with small characters.
HELVET ()	sets a shaded font with thick characters.
HWFONT ()	sets a standard hardware font.
PSFONT (cfont)	sets a PostScript font.
PSMODE (cmode)	enables Greek and Italic characters for PostScript fonts.
SERIF ()	sets a complex shaded font.
SIMPLX ()	sets a single-stroke font.
SMXALF (calph, c1, c2, n)	defines shift characters for alternate alphabets.
TRIPLX ()	sets a triple-stroke font.
TTFONT (cfont)	loads a TrueType font.
WINFNT (cfont)	sets a TrueType font.
X11FNT (cfont, copt)	sets an X11 font for X11 displays.

Figure B.5: Fonts

B.6 Symbols

Routine	Meaning
HSYMBL (n)	defines the height of symbols.
MYSYMB (xray, yray, n, isym, iflag)	defines an user-defined symbol.
RLSYMB (nsym, x, y)	plots symbols for user coordinates.
SYMBOL (nsym, nx, ny)	plots symbols.
SYMROT (xang)	defines a rotation angle for symbols.

Figure B.6: Symbols

B.7 Axis Systems

Routine	Meaning
ADDLAB (cstr, v, itic, cax) AX2GRF ()	plots additional single labels. suppresses the plotting of the upper X- and the left Y-axis.
AX3LEN (nxl, nyl, nzl)	defines axis lengths for a coloured 3-D axis system.
AXGIT ()	plots the lines $X = 0$ and $Y = 0$.
AXSBGD (iclr)	defines the background colour.
AXSERS ()	erases the contents of an axis system.
AXSLEN (nxl, nyl)	defines axis lengths for a 2-D axis system.
AXSORG (nx, ny)	determines the position of a crossed axis system.
AXSPOS (nxp, nyp)	determines the position of axis systems.
AXSTYP (ctype)	select rectangular or crossed axis systems.
BOX2D ()	plots a border around an axis system.
CENTER ()	centres axis systems.
CROSS ()	plots the lines $X = 0$ and $Y = 0$ and marks them with ticks.
ENDGRF ()	terminates an axis system.
FRAME (nfrm)	defines the frame thickness of axis systems.
FRMCLR (nclr)	defines the colour of frames.
GAXPAR (v1, v2, copt, cax, a, b, or, stp, ndig)	calculates axis parameters.
GRACE (ngrace)	affects the clipping margin of axis systems.
GRAF (xa, xe, xor, xstp, ya, ye, yor, ystp)	plots a two-dimensional axis system.
GRAF3 (xa, xe, xor, xstp, ya, ye, yor, ystp, za, ze, zor, zstp)	plots an axis system for colour graphics.
GRAFP (xe, xor, xstp, yor, ystp)	plots a polar axis system.
GRDPOL (nx, ny)	plots a polar grid.
GRID (nx, ny)	overlays a grid on an axis system.
NOCLIP ()	suppresses clipping of user coordinates.
NOGRAF ()	suppresses the plotting of an axis system.
POLMOD (cpos, cdir)	modifies the appearance of polar labels.
SETGRF (c1, c2, c3, c4)	suppresses parts of an axis system.
SETSCL (xray, n, cax)	sets automatic scaling.
TITLE ()	plots a title over an axis system.
XAXGIT ()	plots the line $Y = 0$.
XCROSS ()	plots the line $Y = 0$ and marks it with ticks.
YAXGIT ()	plots the line $X = 0$.
YCROSS ()	plots the line $X = 0$ and marks it with ticks.

Figure B.7: Axis Systems

B.8 Secondary Axes

Routine	Meaning
XAXIS (xa, xe, xor, xstp, nl, cstr, it, nx, ny)	plots a linear X-axis.
XAXLG (xa, xe, xor, xstp, nl, cstr, it, nx, ny)	plots a logarithmic X-axis.
YAXIS (ya, ye, yor, ystp, nl, cstr, it, nx, ny)	plots a linear Y-axis.
YAXLG (ya, ye, yor, ystp, nl, cstr, it, nx, ny)	plots a logarithmic Y-axis.
ZAXIS (za, ze, zor, zstp, nl, cstr, it, id, nx, ny)	plots a linearly scaled colour bar.
ZAXLG (za, ze, zor, zstp, nl, cstr, it, id, nx, ny)	plots a logarithmically scaled colour bar.

Figure B.8: Secondary Axes

B.9 Modification of Axes

Routine	Meaning
AXCLRS (nclr, copt, cax)	defines colours for axis elements.
AXENDS (copt, cax)	suppresses certain labels.
AXSSCL (copt, cax)	defines the axis scaling.
HNAME (nh)	defines the character height of axis names.
INTAX ()	defines integer numbering for all axes.
LABDIG (ndig, cax)	sets the number of decimal places for labels.
LABDIS (ndis, cax)	sets the distance between labels and ticks.
LABELS (copt, cax)	selects labels.
LABJUS (copt, cax)	defines the alignment of axis labels.
LABMOD (ckey, cval, cax)	modifies date labels.
LABPOS (copt, cax)	determines the position of labels.
LABTYP (copt, cax)	defines vertical or horizontal labels.
LOGTIC (copt)	modifies the appearance of logarithmic ticks.
MYLAB (cstr, itic, cax)	sets user-defined labels.
NAMDIS (ndis, cax)	sets the distance between axis names and labels.
NAME (cstr, cax)	defines axis titles.
NAMJUS (copt, cax)	defines the alignment of axis titles.
NOLINE (cax)	suppresses the plotting of axis lines.
RGTLAB ()	right-justifies labels.
RVYNAM ()	defines an angle for Y-axis names.
TICKS (ntics, cax)	sets the number of ticks.
TICLEN (nmaj, nmin)	sets the length of ticks.
TICMOD (copt, cax)	modifies the plotting of ticks at calendar axes.

Routine	Meaning
TICPOS (copt, cax)	determines the position of ticks.
TIMOPT ()	modifies time labels.

Figure B.9: Modification of Axes

B.10 Axis System Titles

Routine	Meaning
HTITLE (nh)	defines the character height of titles.
LFTTIT ()	left-justifies title lines.
LINESP (xfac)	defines line spacing.
TITJUS (copt)	defines the alignment of titles.
TITLE ()	plots axis system titles.
TITLIN (cstr, ilin)	defines text lines for titles.
TITPOS (copt)	defines the position of titles.
VKYTIT (nshift)	shifts titles in the vertical direction.

Figure B.10: System Titles

B.11 Plotting Data Points

Routine	Meaning
BARS (xray, y1ray, y2ray, n)	plots a bar graph.
BARS3D (xray, yray, z1ray, z2ray, xwray, ywray, icray, n)	plots 3-D bars.
CHNATT ()	changes curve attributes.
CHNCRV (copt)	defines attributes changed automatically by CURVE.
CRVMAT (zmat, n, m, ixpts, iypts)	plots a coloured surface.
CURVE (xray, yray, n)	plots curves.
CURVE3 (xray, yray, zray, n)	plots coloured rectangles.
CURVX3 (xray, y, zray, n)	plots rows of coloured rectangles.
CURVY3 (x, yray, zray, n)	plots columns of coloured rectangles.
ERRBAR (xray, yray, e1ray, e2ray, n)	plots error bars.
FBARS (x1ray, x2ray, x3ray, x4ray, x5ray, n)	plots financial bars.
FIELD (x1ray, y1ray, x2ray, y2ray, n, ivec)	plots a vector field.
GAPCRV (xgap)	defines gaps plotted by CURVE.
INCCRIV (ncrv)	defines the number of curves plotted with equal attributes.
INCMRK (nmrk)	selects symbols or lines for CURVE.
LICMOD (cmod, ckey)	sets modes for the LIC algorithm.

Routine	Meaning
LICPTS (xvmat, yvmat, nx, ny, itmat, iwmat, wmat)	calculates a Line Integral Convolution image of a vector field.
LINFIT (xray, yray, n, a, b, r, copt)	plots a fitted line.
MARKER (nsym)	sets the symbols plotted by CURVE.
MRKCLR (nclr)	defines the colour of symbols plotted by CURVE.
NANCRV (copt)	enables handling of NaN values in curves.
NOCHEK ()	suppresses listing of out of range data points.
PIEGRF (cbuf, nlin, xray, n)	plots a pie chart.
POLCRV (copt)	defines the interpolation method used by CURVE.
RESATT ()	resets curve attributes.
SETRES (nx, ny)	sets the size of coloured rectangles.
SHDCRV (x1ray, y1ray, n1, x2ray, y2ray, n2)	plots shaded areas between curves.
SPLMOD (ngrad, npts)	modifies spline interpolation.
STMMOD (cmod, ckey)	sets streamline modes.
STMOPT (n, ckey)	defines integer options for streamlines.
n = STMPTS (xvmat, yvmat, nx, ny, xpray, ypray, x0, y0, xray, yray, nmax, n)	generates a streamline.
STMTRI (xvray, yvray, xpray, ypray, n, ypray, n, i1ray, i2ray, i3ray, ntri, xsray, ysray, nray)	plots streamlines from triangulated data.
STMVAL (x, ckey)	defines floating point options for streamlines.
STREAM (xvmat, yvmat, nx, ny, xpray, ypray, xsray, ysray, n)	plots streamlines.
THKCRV (nthk)	defines the thickness of curves.
TXTURE (itmat, nx, ny)	generates a texture array for LICPTS.
VECFLD (xvray, yvray, xpray, ypray, n, ivec)	plots a vector field.
VECMAT (xvmat, yvmat, nx, ny, xpray, ypray, ivec)	plots a vector field on a regular grid.

Figure B.11: Plotting Data Points

B.12 Legends

Routine	Meaning
FRAME (nfrm)	sets the frame thickness of legends.
LEGBGD (nclr)	defines the background colour of legends.
LEGEND (cbuf, ncor)	plots legends.
LEGINI (cbuf, nlin, nmaxln)	initializes legends.

Routine	Meaning
LEGLIN (cbuf, cstr, ilin)	defines text for legend lines.
LEGOPT (xf1, xf2, xf3)	modifies the appearance of legends.
LEGPAT (ityp, ithk, isym, iclr, ipat, ilin)	stores curve attributes.
LEGPOS (npx, nyp)	determines the position of legends.
LEGSEL (nray, n)	selects legend lines.
LEGTIT (ctitle)	defines the legend title.
LEGTYP (ctype)	defines horizontal or vertical legend lines.
LEGVAL (x, copt)	modifies the appearance of legends.
LINESP (xfac)	affects line spacing.
MIXLEG ()	enables multiple text lines in legends.
nxl = NXLEGN (cbuf)	returns the width of legends in plot coordinates.
nyl = NYLEGN (cbuf)	returns the height of legends in plot coordinates.

Figure B.12: Legends

B.13 Line Styles and Shading Patterns

Routine	Meaning
CHNDOT ()	sets a dotted-dashed line style.
CHNDSH ()	sets a dashed-dotted line style.
COLOR (color)	sets a colour.
DASH ()	sets a dashed line style.
DASHL ()	sets a long-dashed line style.
DASHM ()	sets a medium-dashed line style.
DOT ()	sets a dotted line style.
DOTL ()	sets a long-dotted line style.
HWMODE (cmod, ckey)	enables or disables hardware features for line styles and shading patterns.
LINCLR (nray, n)	defines colours for line styles.
LINTYP (itype)	defines a line style.
LINWID (nwidth)	sets the line width.
LNCAP (copt)	sets the line cap parameter.
LNJOIN (copt)	sets the line join parameter.
LNMLT (xfac)	sets the miter limit parameter.
MYLINE (nray, n)	sets a user-defined line style.
MYPAT (iang, ityp, iden, icross)	defines a global shading pattern.
PENWID (nwidth)	sets the pen width.
SHDFAC (xfac)	modifies the distance of scan lines for software shading.
SHDPAT (ipat)	selects a shading pattern.
SOLID ()	sets a solid line style.

Figure B.13: Line Styles and Shading Patterns

B.14 Cycles

Routine	Meaning
CLRCYC (index, iclr)	modifies the colour cycle.
LINCYC (index, itype)	modifies the line style cycle.
PATCYC (index, ipat)	modifies the pattern cycle.

Figure B.14: Cycles

B.15 Base Transformations

Routine	Meaning
TR3AXS (x, y, z, a)	defines a rotation about an arbitrary axis.
TR3RES ()	resets 3-D base transformations.
TR3ROT (xrot, yrot, zrot)	affects the 3-D rotation of plot vectors.
TR3SCL (xscl, yscl, zscl)	affects the 3-D scaling of plot vectors.
TR3SHF (xshf, yshf, zshf)	affects the 3-D shifting of plot vectors.
TRFRES ()	resets base transformations.
TRFROT (xang, nx, ny)	affects the rotation of plot vectors.
TRFSCL (xscl, yscl)	affects the scaling of plot vectors.
TRFSHF (nx, ny)	affects the shifting of plot vectors.

Figure B.15: Base Transformations

B.16 Shielding

Routine	Meaning
SHIELD (careas, cmode)	defines automatic shielding.
SHLCIR (nx, ny, nr)	defines circles as shielded areas.
SHLDEL (id)	deletes shielded areas.
SHLELL (nx, ny, na, nb, t)	defines ellipses as shielded areas.
id = SHLIND ()	returns the index of a shielded area.
SHLPIE (nx, ny, nr, a, b)	defines pie segments as shielded areas.
SHLPOL (nxray, nyray, n)	defines polygons as shielded areas.
SHLRCT (nx, ny, nw, nh, t)	defines rotated rectangles as shielded areas.
SHLREC (nx, ny, nw, nh)	defines rectangles as shielded areas.
SHLRES (n)	deletes shielded areas.
SHLVIS (id, cmode)	enables or disables shielded areas.

Figure B.16: Shielding

B.17 Parameter Requesting Routines

Routine	Meaning
calf = GETALF ()	returns the base alphabet.
n = GETANG ()	returns the current angle used for text and numbers.

Routine	Meaning
GETCLP (nx, ny, nw, nh)	returns the current clipping window.
n = GETCLR ()	returns the current colour number.
GETDIG (nx, ny, nz)	returns the number of decimal places used in labels.
cdsp = GETDSP ()	returns the terminal type.
cfil = GETFIL ()	returns the current plotfile name.
GETGRF (a, b, or, stp, cax)	returns the scaling of the current axis system.
n = GETHGT ()	returns the current character height.
n = GETHNM ()	returns the character height of axis titles.
GETIND (i, xr, xg, xb)	returns the RGB coordinates for a colour index.
GETLAB (cx, cy, cz)	returns the current labels.
GETLEN (nx, ny, nz)	returns the current axis lengths.
n = GETLEV ()	returns the current level.
n = GETLIN ()	returns the current line width.
cmfl = GETMFL ()	returns the current file format.
c = GETMIX (copt)	returns shift characters for indices and exponents.
GETOR (nx, ny)	returns the current origin.
GETPAG (nx, ny)	returns the current page size.
n = GETPAT ()	returns the current shading pattern.
GETPOS (nx, ny)	returns the position of the axis system.
GETRAN (nx, ny)	returns the range of colour bars.
GETRES (nx, ny)	returns the size of points used in 3-D colour graphics.
GETRGB (xr, xg, xb)	returns the RGB coordinates of the current colour.
GETSCL (nx, ny, nz)	returns the current axis scaling.
GETSCM (nx, ny, nz)	informs if automatic scaling is enabled.
GETSCR (nwpix, nhpix)	returns the screen size in pixels.
c = GETSHF (copt)	returns shift characters for European characters.
GETSP1 (nx, ny, nz)	returns the distance between axis ticks and labels.
GETSP2 (nx, ny, nz)	returns the distance between axis labels and names.
GETSYM (nsym, nh)	returns the current symbol number and height.
GETTCL (nmaj, nmin)	returns the current tick lengths.
GETTIC (nx, ny, nz)	returns the number of ticks plotted between labels.
n = GETTYP ()	returns the current line style.
n = GETUNI ()	returns the current unit used for messages.
x = GETVER ()	returns the DISLIN version number.
GETVK (nytit, nxbar, nybar)	returns the current lengths used for shifting.
cvlt = GETVLT ()	returns the current colour table.
n = GETWID ()	returns the width of colour bars.
GETWIN (nx, ny, nw, nh)	returns the position and size of the graphics window.
id = GETXID ('WINDOW')	returns the X window ID.
n = GMXALF (copt, c1, c2)	returns shift characters for additional alphabets.

Figure B.17: Parameter Requesting Routines

B.18 Elementary Plot Routines

Routine	Meaning
ARCELL (nx, ny, na, nb, alpha, beta, theta)	plots elliptical arcs.
AREAF (nxray, nyray, n)	plots polygons.
CIRCLE (nx, ny, nr)	plots circles.
CONNPT (x, y)	plots a line to a point.
ELLIPS (nx, ny, nr1, nr2)	plots ellipses.
LINE (nx, ny, nu, nv)	plots lines.
NOARLN ()	suppresses the outline of geometric figures.
PIE (nx, ny, nr, a, b)	plots pie segments.
POINT (nx, ny, nb, nh, nc)	plots coloured rectangles where the position is defined by the centre point.
RECFLI (nx, ny, nw, nh, nc)	plots coloured rectangles.
RECTAN (nx, ny, nw, nh)	plots rectangles.
RNDREC (nx, ny, nw, nh, i)	plots a rectangle with rounded corners.
RLARC (x, y, r1, r2, a, b, t)	plots elliptical arcs for user coordinates.
RLAREA (xray, yray, n)	plots polygons for user coordinates.
RLCIRC (x, y, r)	plots circles for user coordinates.
RLELL (x, y, r1, r2)	plots ellipses for user coordinates.
RLINE (x, y, u, v)	plots lines for user coordinates.
RLPIE (x, y, r, a, b)	plots pie segments for user coordinates.
RLPOIN (x, y, nw, nh, nc)	plots coloured rectangles for user coordinates.
RLREC (x, y, xw, xh)	plots rectangles for user coordinates.
RLRND (x, y, xw, xh, iopt)	plots for user coordinates a rectangle with rounded corners.
RLSEC (x, y, r1, r2, a, b, nc)	plots coloured pie sectors for user coordinates.
RLVEC (x1, y1, x2, y2, iv)	plots vectors for user coordinates.
RLWIND (x, xp, yp, nw, a)	plots wind speed symbols for user coordinates.
SECTOR (nx, ny, nr1, nr2, a, b, ncol)	plots coloured pie sectors.
STRTP (x, y)	moves the pen to a point.
TRIFLC (xray, yray, icray, n)	plots solid filled rectangles.
TRIFLL (xray, yray)	plots solid filled rectangles.
VECCLR (nclr)	defines colour for arrow heads.
VECOPT (xopt, ckey)	defines vector options.
VECTOR (nx, ny, nu, nv, iv)	plots vectors.
WINDBR (x, nx, ny, nw, a)	plots wind speed symbols.
XMOVE (x, y)	moves the pen to a point.
XDRAW (x, y)	plots a line to a point.

Figure B.18: Elementary Plot Routines

Routine	Meaning
SPLINE (xray, yray, n, xrray, yrray, nspl)	returns splined points as calculated in CURVE.
SWAPI2 (iray, n)	swaps the bytes of 16 bit integer variables.
SWAPI4 (iray, n)	swaps the bytes of 32 bit integer variables.
TRFMAT (zmat, nx, ny, zmat2, nx2, ny2)	converts matrices.
ntri = TRIANG (xray, yray, n, i1ray, i2ray, i3ray, nmax)	calculates the Delaunay triangulation.
n = TRMLN (cstr)	calculates the number of characters in character strings.
UPSTR (cstr)	converts a character string to uppercase letters.
UTFINT (cstr, iray, nray, n)	converts an UTF8 string to Unicode numbers.

Figure B.20: Utility Routines

B.21 Binary File I/O

Routine	Meaning
istat = CLOSFL (nu)	closes a file.
istat = OPENFL (cfl, nu, irw)	opens a file for binary I/O.
istat = POSIFL (nu, nbyte)	skips to a certain position relative to the start.
n = READFL (nu, iray, nbyte)	reads a given number of bytes.
istat = SKIPFL (n, nbyte)	skips a number of bytes from the current position.
n = TELLFL (nu)	returns the file position.
n = WRITFL (nu, iray, nbyte)	writes a given number of bytes.

Figure B.21: Binary File I/O

B.22 Date Routines

Routine	Meaning
BASDAT (id, im, iy)	defines the base date.
n = INCDAT (id, im, iy)	returns incremented days.
n = NWKDAY (id, im, iy)	returns the weekday of a date.
TRFDAT (n, id, im, iy)	converts incremented days to a date.

Figure B.22: Date Routines

B.23 Cursor Routines

Routine	Meaning
n = CSRKEY ()	returns a character key.
CSRLIN (nx1, ny1, nx2, ny2)	returns the end points of a line.
CSRMOV (nxray, nyray, nmax, n, iret)	collects cursor movements.
nkey = CSRPOS (nx, ny)	sets and returns the cursor position.
CSRPT1 (nx, ny)	returns a pressed cursor position.
CSRPTS (nxray, nyray, nmax, n, iret)	collects cursor positions.
CSRREC (nx1, ny1, nx2, ny2)	returns opposite corners of a rectangle.
CSRTYP (copt)	selects the cursor type.
CSRUNI (copt)	selects the unit of returned cursor positions.
SETCSR (copt)	defines the cursor type of the graphics window.

Figure B.23: Cursor Routines

B.24 Transparency

Routine	Meaning
TPRFIN ()	terminates alpha blending.
TPRINI ()	initializes alpha blending.
TPRMOD (cmode, ckey)	modifies alpha blending.
TPRVAL (x)	sets the alpha value.

Figure B.24: Transparency

B.25 Bar Graphs

Routine	Meaning
BARBOR (iclr)	defines the colour of bar borders.
BARCLR (ic1, ic2, ic3)	defines bar colours.
BARGRP (ngrp, gap)	affects clustered bars.
BARMOD (cmod, copt)	enables variable bars.
BAROPT (xf, ang)	modifies the appearance of 3-D bars.
BARPOS (copt)	selects predefined positions for bars.
BARS (xray, y1ray, y2ray, n)	plots bar graphs.
BARTYP (copt)	selects vertical or horizontal bars.
CHNBAR (copt)	modifies the appearance of bars.
LABCLR (nclr, 'BARS')	defines the colour of bar labels.
LABDIG (ndig, 'BARS')	defines the number of decimal places in bar labels.
LABELS (copt, 'BARS')	defines bar labels.
LABPOS (copt, 'BARS')	defines the position of bar labels.

Figure B.25: Bar Graphs

B.26 Pie Charts

Routine	Meaning
CHNPIE (copt)	defines colour and pattern attributes for pie segments.
LABCLR (nclr, 'PIE')	defines the colour of segment labels.
LABDIG (ndig, 'PIE')	defines the number of decimal places in segment labels.
LABELS (copt, 'PIE')	defines pie labels.
LABPOS (copt, 'PIE')	defines the position of segment labels.
LABTYP (copt, 'PIE')	modifies the appearance of segment labels.
PIEBOR (iclr)	defines the colour of pie borders.
PIECBK (crou)	defines a callback routine for PIEGRF.
PIECLR (ic1ray, ic2ray, n)	defines pie colours.
PIEEXP ()	defines exploded pie segments.
PIEGRF (cbuf, nlin, xray, n)	plots pie charts.
PIELAB (clab, cpos)	sets additional character strings plotted in segment labels.
PIEOPT (xf, ang)	modifies the appearance of 3-D pies.
PIEROT (angle)	sets a rotation angle for 2-D pie charts.
PIETYP (copt)	selects 2-D of 3-D pie charts.
PIEVAL (x, ckey)	modifies parameters for pie charts.
PIEVEC (ivec, copt)	modifies the arrow plotted between labels and segments.

Figure B.26: Pie Charts

B.27 Coloured 3-D Graphics

Routine	Meaning
AX3LEN (nx, ny, nz)	defines axis lengths.
COLOR (color)	defines colours.
COLRAN (nx, ny)	defines the range of colour bars.
CRVMAT (zmat, n, m, ixpts, iypts)	plots a coloured surface.
CRVQDR (xray, yray, zray, n)	plots coloured quadrangles.
CRVTRI (xray, yray, zray, n, i1ray, i2ray, i3ray, ntri)	plots the coloured surface of a Delaunay triangulation.
CURVE3 (xray, yray, zray, n)	plots coloured rectangles.
CURVX3 (xray, y, zray, n)	plots rows of coloured rectangles.
CURVY3 (x, yray, zray, n)	plots columns of coloured rectangles.
ERASE ()	erases the screen.
FRMBAR (nfrm)	defines the thickness of frames around colour bars.
GRAF3 (xa, xe, xor, xstp, ya, ye, yor, ystp, za, ze, zor, zstp)	plots a coloured axis system.
JUSBAR (copt)	defines the alignment of colour bars.
NOBAR ()	suppresses the plotting of colour bars.

Routine	Meaning
NOBGD ()	suppresses the plotting of points which have the same colour as the background.
n = NZPOSN (z)	converts a Z-coordinate to a colour number.
POINT (nx, ny, nb, nh, nc)	plots coloured rectangles where the position is defined by the centre point.
POSBAR (copt)	sets the position of colour bars.
RECFLI (nx, ny, nw, nh, nc)	plots coloured rectangles.
RLPOIN (x, y, nw, nh, nc)	plots coloured rectangles for user coordinates.
RLSEC (x, y, r1, r2, a, b, ncol)	plots coloured pie sectors for user coordinates.
SECTOR (nx, ny, nr1, nr2, a, b, ncol)	plots coloured pie sectors.
SETRES (nx, ny)	defines the size of coloured rectangles.
SPCBAR (nspc)	sets the space between colour bars and axis systems.
VKXBAR (nshift)	shifts colour bars in the X-direction.
VKYBAR (nshift)	shifts colour bars in the Y-direction.
WIDBAR (nw)	defines the width of colour bars.
ZAXIS (za, ze, zor, zstp, nl, cstr, it, id, nx, ny)	plots a linearly scaled colour bar.
ZAXLG (za, ze, zor, zstp, nl, cstr, it, id, nx, ny)	plots a logarithmically scaled colour bar.

Figure B.27: Coloured 3-D Graphics

B.28 3-D Graphics

Routine	Meaning
ABS3PT (x, y, z, xp, yp)	converts absolute 3-D coordinates to plot coordinates.
AXIS3D (x, y, z)	defines the lengths of the 3-D box.
BARS3D (xray, yray, z1ray, z2ray, xwray, ywray, icray, n)	plots 3-D bars.
BOX3D ()	plots a border around the 3-D box.
CONE3D (xm, ym, zm, r, h1, h2, n, m)	plots a cone.
CONN3D (x, y, z)	plots a line to a point in 3-D space.
CONSHD3D (xray, n, yray, m, y, z) zmat, zlvray, nlev)	plots 3-D contours.
CURV3D (xray, yray, zray, n)	plots curves or symbols.
CURV4D (xray, yray, zray, wray, n)	plots coloured 3-d symbols.
CYL3D (xm, ym, zm, r, h, n, m)	plots a cylinder.
DBFFIN ()	terminates a depth sort.
iret = DBFINI ()	initializes a depth depth sort.

Routine	Meaning
DBFMOD (cmod)	can disable the depth sort.
DISK3D (xm, ym, zm, r1, r2, n, m)	plots a disk.
FIELD3D (x1ray, y1ray, z1ray, x2ray, y2ray, z2ray, n, ivec)	plots a vector field.
FLAB3D ()	disables the suppression of axis labels.
n = GETLIT (x, y, z, xn, yn, zn)	calculates colour values.
GETMAT (xray, yray, zray, n, zmat, nx, ny, zv, imat, wmat)	calculates a function matrix from randomly distributed data points.
GRAF3D (xa, xe, xor, xstp, ya, ye, yor, ystp, za, ze, zor, zstp)	plots an axis system.
GRFFIN ()	terminates a projection into 3-D space.
GRFINI (x1, y1, z1, x2, y2, z2, x3, y3, z3)	initializes projections in 3-D space.
GRID3D (nx, ny, copt)	plots a grid.
HSYM3D (xh)	sets the height of 3-D symbols.
ISOPTS (xray, nx, yray, ny, zray, nz, wmat, wlev, xtri, ytri, ztri, nmax, ntri)	calculates isosurfaces.
LABL3D (copt)	modifies the appearance of labels on the 3-D box.
LIGHT (cmode)	turns lighting on or off.
LITMOD (id, cmode)	turns single light sources on or off.
LITOP3 (id, xr, xg, xb, ctype)	modifies light parameters.
LITOPT (id, xval, ctype)	modifies light parameters.
LITPOS (id, xp, yp, zp, copt)	sets the position of light sources.
MATOP3 (xr, xg, xb, ctype)	modifies material parameters.
MATOPT (xval, ctype)	modifies material parameters.
MDFMAT (ix, iy, w)	modifies the algorithm used in GETMAT.
MSHCLR (iclr)	defines the colour of surface meshes.
MSHCRV (n)	sets the resolution of meshes for 3-D curves.
NOHIDE ()	disables the hidden-line algorithm.
PIKE3D (x1, y1, z1, x2, y2, z2, r, n, m)	plots a cone.
PLAT3D (xm, ym, zm, xl, copt)	plots a Platonic solid.
PLYFIN (cfil, cobj)	terminates output of polygons to a PLY format.
PLYINI (copt)	initializes output of polygons to a PLY format.
POS3PT (x, y, z, xp, yp, zp)	converts user coordinates to absolute 3-D coordinates.
PYRA3D (xm, ym, zm, xl, h1, h2, n)	plots a pyramid.
QUAD3D (xm, ym, zm, xl, yl, zl)	plots a quad.
REL3PT (x, y, z, xp, yp)	converts user coordinates to plot coordinates.
ROT3D (a, b, c)	defines rotation angles for symbols and solids.
SETFCE (copt)	sets a face side for defining material parameters.

Routine	Meaning
SHLSUR () SPHE3D (xm, ym, zm, r, n, m) n = STMPTS3D (xv, yv, zv, nx, ny, nz, xpray, ypray, zpray, x0, y0, z0, xray, yray, zray, nmax) STREAM3D (xv, yv, zv, nx, ny, nz, xpray, ypray, zpray, xsray, ysray, n) STRT3D (x, y, z) SURCLR (itop, ibot) SURFCE (xray, nx, yray, ny, zmat) SURFCP (cfun, a1, a2, astp, b1, b2, bstp) SURFUN (cfun, ixp, xdel, iyp, ydel) SURISO (xray, nx, yray, ny, zray, nz, wmat, wlev) SURMAT (zmat, nx, ny, ixpts, iypts) SURMSH (copt) SUROPT (copt) SURSHC (xray, nx, yray, ny, zmat, wmat) SURSHD (xray, nx, yray, ny, zmat) SURTRI (xray, yray, zray, n, i1ray, i2ray, i3ray, ntri) SURVIS (copt) SYMB3D (n, xm, ym, zm) THKC3D (nthk) TORUS3D (xm, ym, zm, r1, r2, h, a1, a2, n, m) TUBE3D (x1, y1, z1, x2, y2, z2, r, n, m) VECF3D (xvray, yvray, zvray, xpray, ypray, zpray, n, ivec) VECMAT3D (xv, yv, zv, nx, ny, nz, xpray, ypray, zpray, ivec) VECTR3 (x1, y1, z1, x2, y2, z2, ivec) VANG3D (ang) VIEW3D (x, y, z, copt) VSCL3D (xfac) VTX3D (xray, yray, zray, n, copt) VTXC3D (xray, yray, zray, icray, n, copt)	protects surfaces from overwriting. plots a sphere. generates a streamline. plots streamlines. moves the pen to a point. selects surface colours. plots the surface of a function matrix. plots the surface of a parametric function. plots the surface grid of a function. plots isosurfaces. plots the surface of a function matrix. enables grid lines for surfcp and surshd. suppresses surface lines for surface. plots a coloured surface. plots a coloured surface. plots the surface of an Delaunay triangulation. determines the visible part of surfaces. plots a 3-D symbol. defines the thickness of 3-D curves. plots a torus. plots a tube. plots a vector field. plots a vector field on a regular grid. plots vectors in 3-D space. defines the field of view. defines the viewpoint. sets a scaling factor for orthographic view. plots faces from vertices. plots faces from vertices.

Routine	Meaning
VTXN3D (xray, yray, zray, xnray, ynray, znray, n, copt)	plots faces from vertices.
VUP3D (ang)	defines the camera orientation.
ZBFERS ()	erases the frame buffer of a Z-buffer.
ZBFFIN ()	terminates the Z-buffer.
iret = ZBFINI ()	allocates space for a Z-buffer.
ZBFLIN (x1, y1, z1, x2, y2, z2)	plots lines.
ZBFMOD (cmod)	can disable the Z-buffer.
ZBFRES ()	resets the Z-buffer.
ZBFSCL (x)	scales the internal image for PDF output.
ZBFTRI (xray, yray, zray, iray)	plots triangles.
ZSCALE (zmin, zmax)	defines a Z-scaling for coloured surfaces.

Figure B.28: 3-D Graphics

B.29 Geographical Projections

Routine	Meaning
CURVMP (xray, yray, n)	plots curves or symbols.
GRAFMP (xa, xe, xor, xstp, ya, ye, yor, ystp)	plots a geographical axis system.
GRIDMP (nx, ny)	plots a grid.
MAPBAS (copt)	defines the base map.
MAPFIL (cfil, copt)	defines an external map file.
MAPIMG (cfil, x1, x2, x3, x4, x5, x6)	plots a BMP or GIF map image.
MAPLAB (copt, ckey)	defines label options.
MAPLEV (copt)	specifies land or lake plotting.
MAPMOD (copt)	modifies the connection of points used in CURVMP.
MAPOPT (copt, ckey)	defines map options.
MAPPOL (xpol, ypol)	defines the map pole used for azimuthal projections.
MAPREF (ylw, yup)	defines two latitudes used for conical projections.
POS2PT (x, y, xp, yp)	converts user coordinates to plot coordinates.
PROJECT (copt)	selects a projection.
PT2POS (x, y, xp, yp)	converts plot coordinates to user coordinates.
SHDAFR (inray, ipray, icray, n)	shades African countries.
SHDASI (inray, ipray, icray, n)	shades Asiatic countries.
SHDAUS (inray, ipray, icray, n)	shades Oceanic countries.
SHDEUR (inray, ipray, icray, n)	shades European countries.
SHDMAP (copt)	shades continents.
SHDNOR (inray, ipray, icray, n)	shades states of North and Central America.
SHDSOU (inray, ipray, icray, n)	shades states of South America.

Routine	Meaning
SHDUSA (inray, ipray, icray, n)	shades USA states.
WORLD ()	plots coastlines and lakes.
XAXMAP (xa, xe, xor, xstp, cstr, nt, ny)	plots a secondary X-axis.
YAXMAP (ya, ye, yor, ystp, cstr, nt, nx)	plots a secondary Y-axis.

Figure B.29: Geographical Projections

B.30 Contouring

Routine	Meaning
CONCLR (ncray, n)	defines colours for shaded contours.
CONCRV (xray, yray, n, z)	plots generated contours.
CONFLC (xray, yray, zray, n, i1ray, i2ray, i3ray, ntri, zlvray, nlev)	plots filled contours of an Delaunay triangulation.
CONGAP (xfac)	affects the spacing between contour lines and labels.
CONLAB (copt)	defines a character string used for contour labels.
CONMAT (zmat, nx, ny, z)	plots contours.
CONMOD (xfac, xquot)	affects the position of contour labels.
CONPTS (xray, n, yray, m, zmat, zlev, xpts, ypts, maxpts, iray, maxcrv, ncrv)	generates contours.
CONSHD (xray, nx, yray, ny, zmat, zlvray, n)	plots shaded contours.
CONSHD2 (xmat, ymat, zmat, nx, ny, zlvray, n)	plots shaded contours.
CONTRI (xray, yray, zray, n, i1ray, i2ray, i3ray, ntri, zlev)	plots contours of an Delaunay triangulation.
CONTUR (xray, nx, yray, ny, zmat, zlev)	plots contours.
CONTUR2 (xmat, ymat, zmat, nx, ny, zlev)	plots contours.
LABCLR (nclr, 'CONT')	defines the colour of contour labels.
LABDIS (ndis, 'CONT')	defines the distance between labels.
LABELS (copt, 'CONT')	defines contour labels.
SHDMOD (copt, 'CONT')	sets the algorithm for shaded contours.
TRIPTS (xray, yray, zray, n, i1ray, i2ray, i3ray, ntri, zlev, xpts, ypts, maxpts, iray, maxcrv, ncrv)	generates contours from triangulated data.

Figure B.30: Contouring

B.31 Image Routines

Routine	Meaning
EXPIMG (cfil, copt)	copies an image from memory to a file.
IMGBOX (nx, ny, nw, nh)	defines a rectangle for PostScript/PDF output.
IMGCLP (nx, ny, nw, nh)	defines a clipping rectangle.
IMGFIN ()	terminates transferring of image data.
IMGINI ()	initializes transferring of image data.
IMGMOD (cmod)	selects index or RGB mode.
IMGSIZ (nw, nh)	defines an image size for PostScript/PDF output.
IMGTPR (nclr)	defines a transparency colour for images.
iret = LDIMG (cfil, isray, nmax, nc)	loads an image into an array.
n = RBFPNG (cbuf, nmax)	stores an image as PNG file in a buffer.
RBMP (cfil)	stores an image as a BMP file.
RGIF (cfil)	stores an image as a GIF file.
RIMAGE (cfil)	copies an image from memory to a file.
RPIXEL (ix, iy, iclr)	reads a pixel from memory.
RPIXLS (iray, ix, iy, nw, nh)	reads image data from memory.
RPNG (cfil)	stores an image as a PNG file.
RPPM (cfil)	stores an image as a PPM file.
RPXROW (iray, nx, ny, n)	reads a row of image data from memory.
RTIFF (cfil)	stores an image as a TIFF file.
TIFORG (nx, ny)	defines the position of TIFF files copied with WTIFF.
TIFWIN (nx, ny, nw, nh)	defines a clipping window for TIFF files.
WIMAGE (cfil)	copies an image from file to memory.
WPIXEL (ix, iy, iclr)	writes a pixel to memory.
WPIXLS (iray, ix, iy, nw, nh)	writes image data to memory.
WPXROW (iray, nx, ny, n)	write a row of image data to memory.
WTIFF (cfil)	copies a TIFF file created by DISLIN to memory.

Figure B.31: Image Routines

B.32 Window Routines

Routine	Meaning
CLSWIN (id)	closes a window.
HIDWIN (id, copt)	defines whether a window is visible or not.
OPNWIN (id)	opens a window for graphics output.
PAGWIN (nxp, nyp)	defines page formats for windows.
SELWIN (id)	selects a window for graphics output.
WINDOW (nx, ny, nw, nh)	defines the position and size of windows.
WINAPP (capp)	defines a window or console application.
WINCBK (crout, copt)	defines a callback routine for the windows size.
WINICO (cstr)	loads an icon for the windows title bar.
id = WINID ()	returns the ID of the currently selected window.
WINJUS (copt)	defines the position of the graphics window.
WINKEY (ckey)	defines a key that can be used for program continuation in DISFIN.
WINMOD (copt)	affects the handling of windows in DISFIN.
WINSIZ (nw, nh)	defines the size of windows.
WINTIT (cstr)	sets the title of the currently selected window.
WINTYP (copt)	sets the type of the graphics window.
X11MOD (copt)	enables backing store.

Figure B.32: Window Routines

B.33 Widget Routines

Routine	Meaning
DOEVNT ()	processes pending events.
ival = DWGBUT (cstr, ival)	displays a message that can be answered with 'Yes' or 'No'.
iret = DWGERR ()	returns a status for dialog widget routines.
cfil = DWGFIL (clab, cfil, cmsk)	creates a file selection box.
isel = DWGLIS (clab, clis, isel)	gets a selection from a list of items.
DWGMSG (cstr)	displays a message.
cstr = DWGTXN (clab, cstr)	prompts an user for input.
n = GWGATT (id, copt)	requests widget attributes.
n = GWGBOX (id)	requests the value of a box widget.
n = GWGBUT (id)	requests the status of a button widget.
cfil = GWGFIL (id)	requests the value of a file widget.
x = GWGFLT (id)	requests the value of a text widget as real number.
n = GWGGUI ()	returns the used GUI.
n = GWGINT (id)	requests the value of a text widget as integer.
n = GWGLIS (id)	requests the value of a list widget.
x = GWGSCL (id)	requests the value of a scale widget.

Routine	Meaning
GWGSIZ (id, nw, nh)	returns the size of widgets.
x = GWGTBF (id, irow, icol)	requests the value of a table cell as real number.
n = GWBTBI (id, irow, icol)	requests the value of a table cell as integer.
GWGTBL (id, xray, n, idx, copt)	requests the values of table cells.
cstr = GWGTBS (id, irow, icol)	requests the value of a table cell as a string.
cstr = GWGTX (id)	requests the value of a text widget.
n = GWGXID (id)	requests the windows ID of a widget.
ITMNCAT (clis, N, citem)	concatenates an element to a list string.
n = ITMCNT (clis)	calculates the number of elements in a list string.
citem = ITMSTR (clis, n)	extracts an element from a list string.
MSGBOX (cstr)	displays a message.
SWGATT (id, catt, copt)	sets widget attributes.
SWGBGD (id, xr, xg, xb)	changes the background colour of widgets.
SWGBOX (id, isel)	changes the selection of a box widget.
SWGBUT (id, ival)	changes the status of a button widget.
SWGCB (id, routine, iray)	connects a widget with a callback routine.
SWGCB2 (id, crout)	connects a callback routine with a table widget.
SWGCBK (id, crout)	connects a widget with a callback routine.
SWGCLR (xr, xg, xb, copt)	sets widget colours.
SWGDRW (xf)	defines the height of draw widgets.
SWGFGD (id, xr, xg, xb)	changes the foreground colour of widgets.
SWGFIL (id, cfil)	changes the value of a file widget.
SWGFLT (id, x, ndig)	changes the value of text widgets.
SWG FNT (cfnt, npts)	defines widget fonts.
SWGFOC (id)	sets the keyboard focus.
SWG HLP (cstr)	sets a character string for the Help menu.
SWGINT (id, n)	changes the value of text widgets.
SWG IOP (i, copt)	sets integer options for widgets.
SWGJUS (cjus, class)	defines the alignment of label widgets.
SWG LIS (id, isel)	changes the selection of a list widget.
SWG MIX (char, cmix)	defines control characters.
SWGMRG (ival, cmrg)	defines widget margins.
SWG OPT (copt, ckey)	sets a center option for parent widgets.
SWG POP (copt)	modifies the appearance of the popup menubar.
SWG POS (nx, ny)	defines the position of widgets.
SWG RAY (xray, n, copt)	defines the width of columns in table widgets.
SWG SCL (id, xval)	changes the value of a scale widget.
SWG SIZ (nw, nh)	defines the size of widgets.
SWG SPC (xspc, yspc)	modifies the spaces between widgets.
SWG STP (xstp)	defines a step value for scale widgets.
SWG TBF (id, x, ndig, i, j, copt)	changes the values of table cells.
SWG TBI (id, ix, i, j, copt)	changes the values of table cells.

Routine	Meaning
SWGTBL (id, xray, n, ndig, idx, copt)	changes the values of table cells.
SWGTBS (id, cstr, i, j, copt)	changes the values of table cells.
SWGTIT (cstr)	sets a title for the main widget.
SWGTX (id, cval)	changes the value of a text widget.
SWGTYP (ctype, class)	modifies the appearance of widgets.
SWGVAL (id, xval)	changes the value of progress bars.
SWGWIN (nx, ny, nw, nh)	defines the position and size of widgets.
SWGWITH (nwth)	sets the default width of widgets.
id = WGAPP (ip, clab)	creates an entry in a popup menu.
id = WGAPPB (ip, iray, nw, nh)	uses an image as entry in a popup menu.
id = WGBAS (ip, copt)	creates a container widget.
id = WGBOX (ip, clis, isel)	creates a list widget with toggle buttons.
id = WGBUT (ip, cval, ival)	creates a button widget.
id = WGCMD (ip, clab, cmd)	creates a push button widget. A system command will be executed if the button is pressed.
id = WGDLS (ip, clis, isel)	creates a dropping list widget.
id = WGDRAW (ip)	creates a draw widget.
id = WGFIL (ip, clab, cfil, cmsk)	creates a file widget.
WGFIN ()	terminates widget routines.
id = WGICON (ip, clab, nw, nh, cfl)	creates a label widget with an icon as label.
id = WGIMG (ip, clab, iray, nw, nh)	creates a label widget with an image as label.
id = WGINI (copt)	creates a main widget and initializes widget routines.
id = WGLAB (ip, cstr)	creates a label widget.
id = WGLIS (ip, clis, isel)	creates a list widget.
id = WGLTXT (ip, clab, cstr)	creates a labeled text widget.
id = WGOK (ip)	creates a OK push button widget.
id = WGPBAR (ip, x1, x2, xstp)	creates a progress bar.
id = WGPBUT (ip, clab, nwth)	creates a push button widget.
id = WGPICON (ip, clab, nw, nh, cfl)	creates a push button with an icon as label.
id = WGPIMG (ip, clab, iray, nw, nh)	creates a push button with an image as label.
id = WGPOP (ip, cstr)	creates a popup menu.
id = WGPOPB (ip, iray, nw, nh)	uses an image as a popup menu.
id = WGQUIT (ip)	creates a Quit push button widget.
id = WGSCL (ip, clab, xmin,	creates a scale widget.
xmax, xval, ndez)	
id = WGSEP (ip)	creates a separator widget.
id = WGSTXT (ip, nsize, nmax)	creates a scrolled text widget.
id = WGTBL (ip, nrows, ncols)	creates a table widget.
id = WGTXT (ip, cstr)	creates a text widget.

Figure B.33: Widget Routines

B.34 DISLIN Quickplots

Routine	Meaning
QPLBAR (xray, n)	plots a bar graph.
QPLCLR (zmat, n, m)	plots a coloured surface.
QPLCON (zmat, n, m, nlv)	makes a contour plot.
QPLCRV (xray, yray, n, copt)	plots multiple curves.
QPLOT (xray, yray, n)	plots a curve.
QPLPIE (xray, yray, n)	plots a pie chart.
QPLSCA (xray, yray, n)	makes a scatter plot.
QPLSCL (a, e, or, step, copt)	sets a user-defined scaling.
QPLSUR (zmat, n, m)	plots a surface.

Figure B.34: DISLIN Quickplots

B.35 Reading FITS Files

Routine	Meaning
FITSCLS ()	closes a FITS file.
x = FITSFLT (ckey)	returns the floatingpoint value of a key.
n = FITSIMG (iray, nmax)	copies a FITS image to an array.
istat = FITSOPN (cfil)	opens a FITS file for reading.
cval = FITSSTR (ckey)	returns the string value of a key.
n = FITSTYP (ckey)	returns the type of a key.
n = FITSVAL (ckey)	returns the integer value of a key.

Figure B.35: Reading FITS Files

B.36 MPS Logo

Routine	Meaning
MPSLOGO (nx, ny, nsize, copt)	plots the MPS logo.

Figure B.36: MPS Logo

Appendix C

Examples

This appendix presents some examples of the DISLIN manual in DISGCL coding. The examples can be found in the DISLIN subdirectory gldir and can be executed with the command:

```
disgcl example
```

where example is one of the examples.

C.1 Demonstration of CURVE

```
%GCL
// Demonstration of CURVE

N=101
PI    = 3.1415926

XRAY  = FALLOC (N)
XRAY  = (XRAY - 1.) * 3.6
YRAY1 = SIN (XRAY * PI / 180.)
YRAY2 = COS (XRAY * PI / 180.)

METAFL ('CONS')
DISINI ()
COMPLX ()
PAGERA ()

NAME   ('X-axis', 'X')
NAME   ('Y-axis', 'Y')
TITLIN ('Demonstration of CURVE', 2)
TICKS  (10, 'X')
LABDIG (-1, 'X')

IC = INTRGB (0.95, 0.95, 0.95)
AXSBGD (IC)
GRAF   (0., 360., 0., 90., -1., 1., -1., 0.5)
SETRGB (0.7, 0.7, 0.7)
GRID   (1, 1)

COLOR  ('FORE')
BOX2D  ()
HEIGHT (50)
TITLE  ()

COLOR  ('RED')
CURVE  (XRAY, YRAY1, N)
COLOR  ('GREEN')
CURVE  (XRAY, YRAY2, N)
DISFIN ()
```


Demonstration of CURVE

SIN(X), COS(X)

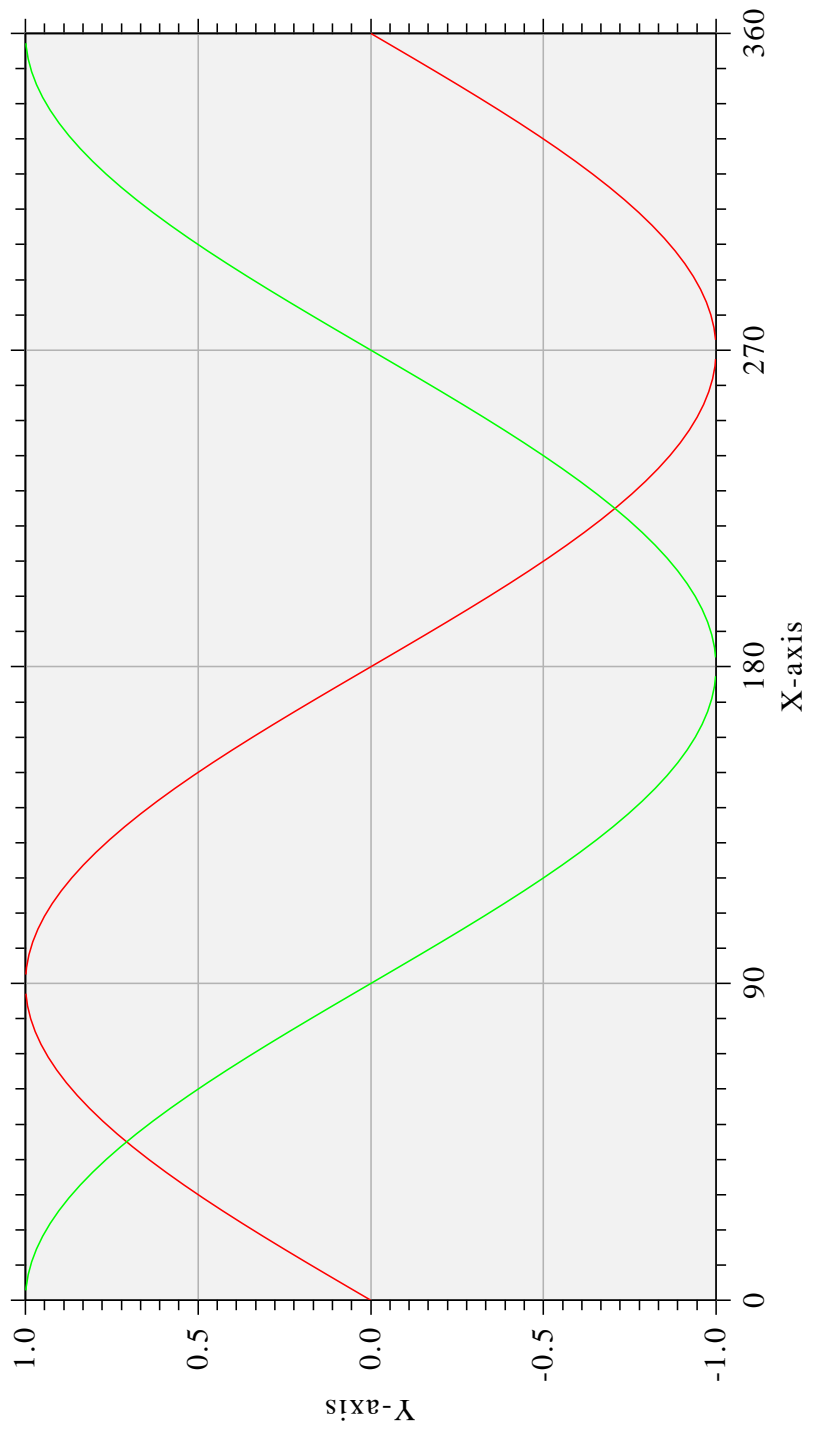


Figure C.1: Demonstration of CURVE

C.2 Polar Plots

```
%GCL
// Polar Plots

N=300
M=10
STEP = 360./(N-1)
F     = STEP * 3.1415926 / 180.
Y1    = FALLOC (N) * F
X1    = SIN (5 * Y1)
X2    = FALLOC (M) + 1
Y2    = FALLOC (M) + 1

SETPAG ('DA4P')
METAFL ('CONS')
DISINI ()
HWFONT ()
PAGERA ()

TITLIN ('Polar Plots', 2)
TICKS  (3, 'Y')
AXENDS ('NOENDS', 'X')
LABDIG (-1, 'Y')
AXSLEN (1000, 1000)
AXSORG (1050, 900)

IC = INTRGB (0.95, 0.95, 0.95)
AXSBGD (IC)
GRAFP  (1.,0., 0.2, 0., 30.)
CURVE  (x1, y1, n)
HTITLE (50)
TITLE  ()
ENDGRF ()

LABDIG (-1, 'X')
AXSORG (1050, 2250)
LABTYP ('VERT', 'Y')
GRAFP  (10.,0.,2.,0.,30.)
BARWTH (-5.)
POLCRV ('FBARS')
CURVE  (x2, y2, m)

DISFIN ()
```

Polar Plots

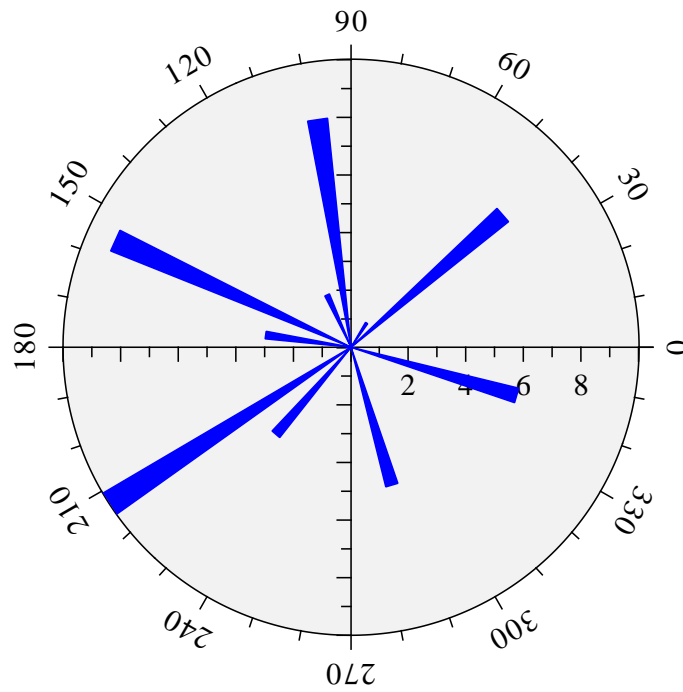
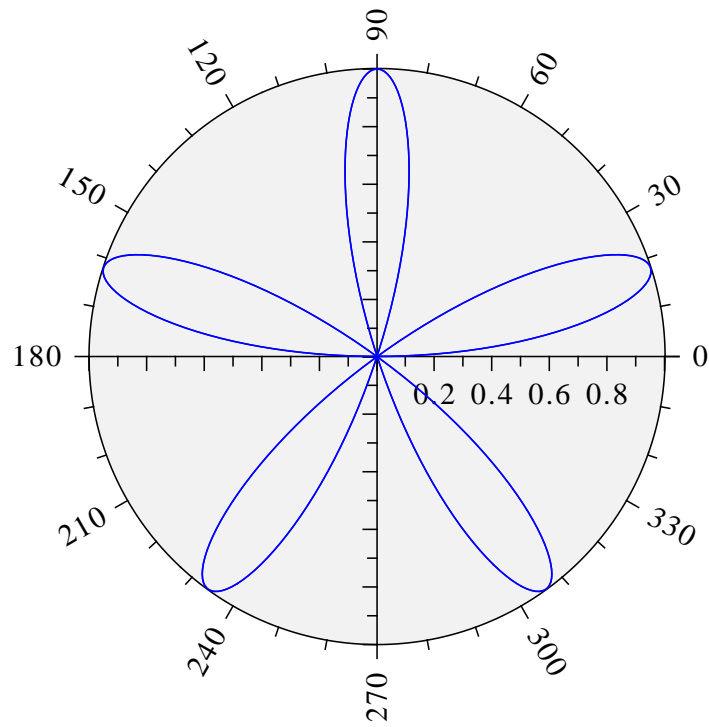


Figure C.2: Polar Plots

C.3 3-D Colour Plot

```
%GCL
// 3-D Colour Plot

N = 100
FLOAT ZMAT[N,N], XRAY[N]

PI = 3.1415927
STEP = 2. * PI / (N - 1)

DO I = 0, N - 1
  XRAY[I] = SIN (I * STEP)
END DO

DO J = 0, N - 1
  ZMAT[*,J] = 2 * XRAY * SIN (J * STEP)
END DO

METAFL ('CONS')
DISINI ()
COMPLX ()
PAGERA ()

LABDIG (-1, 'XYZ')
NAME ('X-Achse', 'X')
NAME ('Y-Achse', 'Y')
NAME ('Z-Achse', 'Z')
TITLIN ('3-D Colour Plot of the Function', 1)
TITLIN ('F(X,Y) = 2 * SIN(X) * SIN(Y)', 3)

AUTRES (N, N)
GRAF3 (0., 360., 0., 90., 0., 360., 0., 90., -2., 2., -2., 1.0)
TITLE ()

CRVMAT (ZMAT, N, N, 1, 1)
MPAEPL (3)
DISFIN ()
```

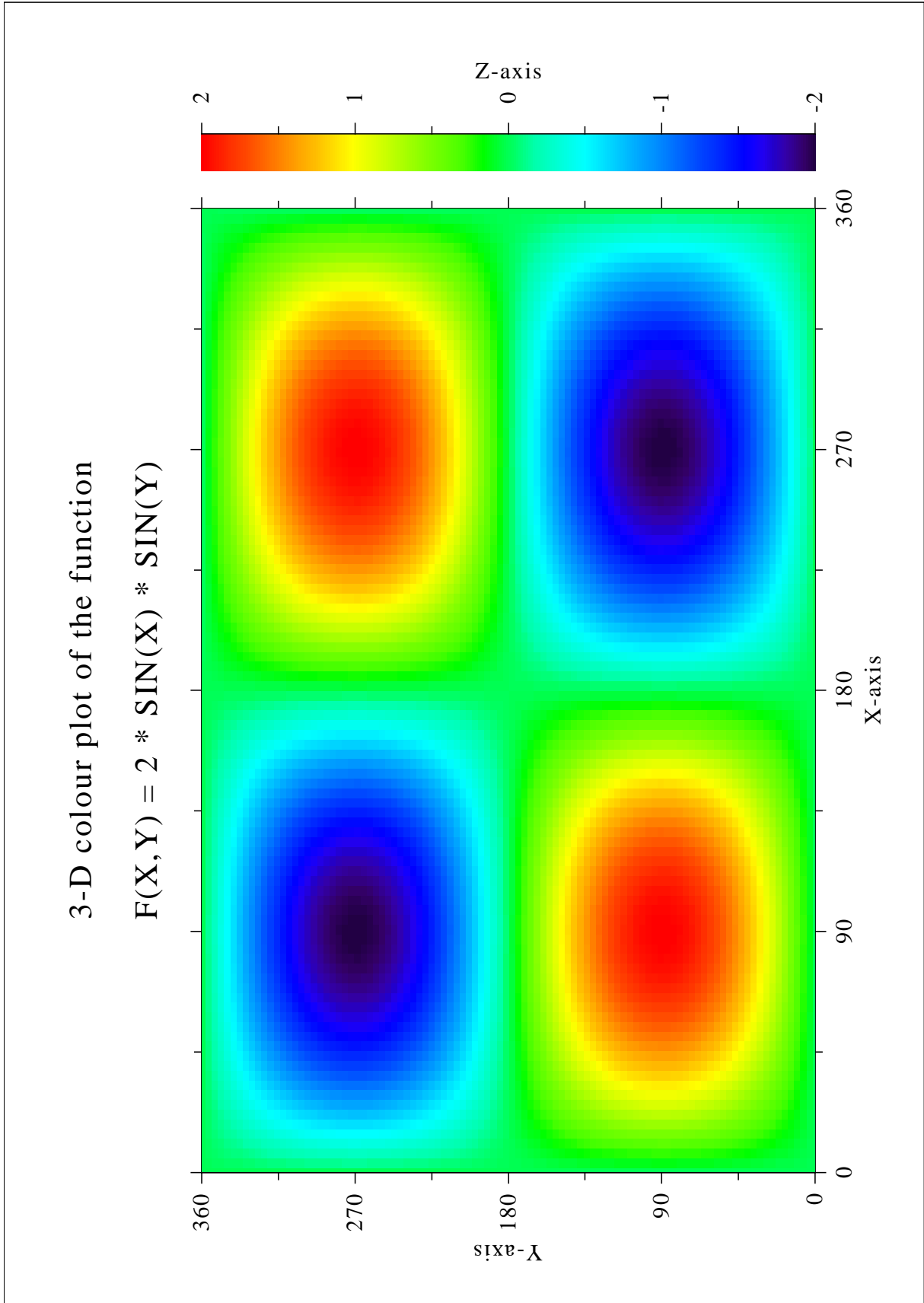


Figure C.3: 3-D Colour Plot

C.4 Surface Plot

```
%GCL
// Surface Plot
N = 100
FLOAT ZMAT[N,N], XRAY[N]

PI = 3.1415927
STEP = 2. * PI / (N - 1)

DO I = 0, N - 1
  XRAY[I] = SIN (I * STEP)
END DO

DO J = 0, N - 1
  ZMAT[* ,J] = 2 * XRAY * SIN (J * STEP)
END DO

METAFL ('CONS')
SETPAG ('DA4P')
DISINI ()
COMPLX ()
PAGERA ()

AXSPOS (200, 2600)
AXSLEN (1800, 1800)

NAME ('X-axis', 'X')
NAME ('Y-axis', 'Y')
NAME ('Z-axis', 'Z')

TITLIN ('Surface Plot (SURMAT)', 2)
TITLIN ('F(X,Y) = 2 * SIN(X) * SIN(Y)', 4)

VIEW3D (-5., -5., 4., 'ABS')
GRAF3D (0., 360., 0., 90., 0., 360., 0., 90., -3., 3., -3., 1.)
HEIGHT (50)
TITLE ()

COLOR ('GREEN')
SHLSUR ()
SURMAT (ZMAT, N, N, 1, 1)

DISFIN ()
```

Surface plot (SURMAT)

$$F(X,Y) = 2*\text{SIN}(X)*\text{SIN}(Y)$$

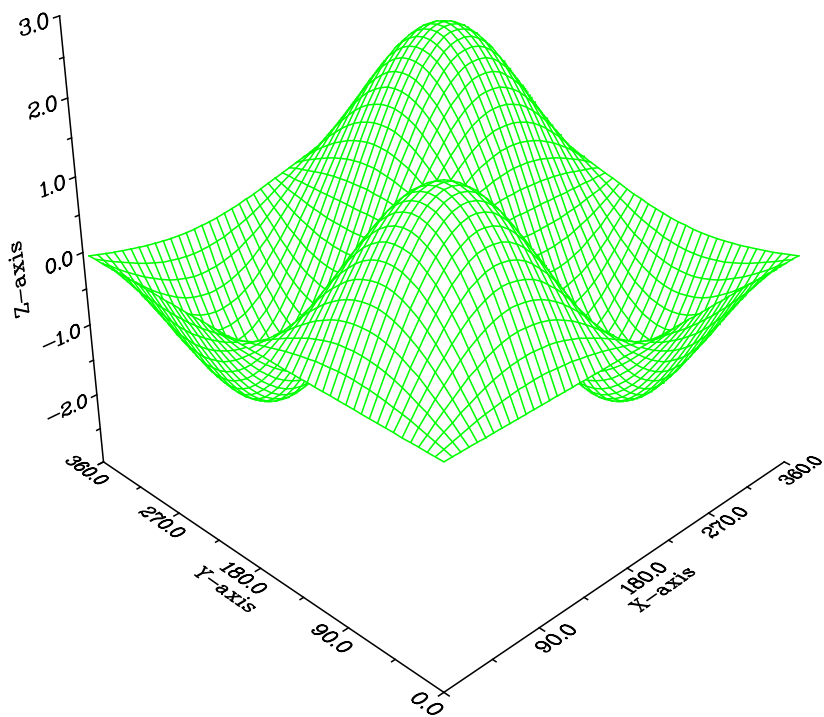


Figure C.4: Surface Plot

C.5 Contour Plot

```
%GCL
// Contour Plot
N = 100
FLOAT ZMAT[N,N], XRAY[N]

FPI = 3.1415927 / 180.
STEP = 360. / (N - 1)
X = FALLOC (N) * STEP
Y = FALLOC (N) * STEP

DO J = 0, N - 1
  ZMAT[* , J] = 2 * SIN (X * FPI) * SIN (Y[J] * FPI)
END DO

METAFL ('CONS')
SETPAG ('DA4P')
DISINI ()
COMPLX ()
PAGERA ()

INTAX ()
AXSPOS (450, 2670)

NAME ('X-axis', 'X')
NAME ('Y-axis', 'Y')
TITLIN ('Contour Plot', 2)
TITLIN ('F(X,Y) = 2 * SIN(X) * SIN(Y)', 4)

GRAF (0., 360., 0., 90., 0., 360., 0., 90.)

HEIGHT (30)
DO I = 1, 9
  ZLEV = -2.0 + (I - 1) * 0.5
  IF (I == 5)
    LABELS ('NONE', 'CONTUR')
  ELSE
    LABELS ('FLOAT', 'CONTUR')
  END IF
  CONTUR (X, N, Y, N, ZMAT, ZLEV)
END DO

HEIGHT (50)
TITLE ()
DISFIN ()
```


Contour Plot

$$F(X,Y) = 2 * \text{SIN}(X) * \text{SIN}(Y)$$

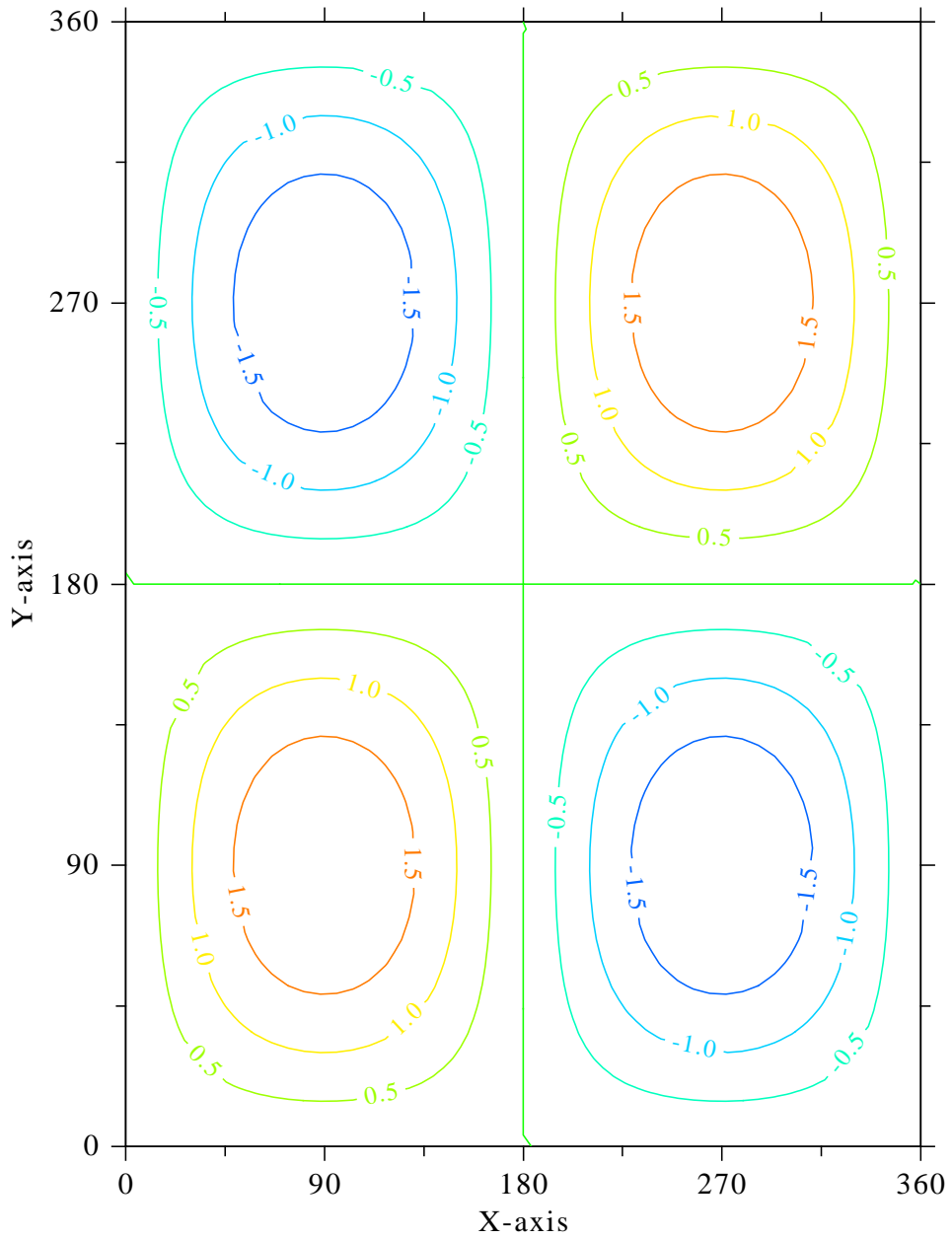


Figure C.5: Contour Plot

C.6 Shaded Contour Plot

```
%GCL
// Shaded Contour Plot
N = 100
FLOAT ZMAT[N,N], XRAY[N], YRAY[N], ZLEV[12]

STEP = 1.6 / (N - 1)
XRAY = FALLOC (N) * STEP
YRAY = FALLOC (N) * STEP
X      = XRAY * XRAY - 1

DO J = 0, N - 1
  Y=YRAY[J] * YRAY[J] - 1.
  ZMAT[* ,J] = X * X + Y * Y
END DO

METAFL ('CONS')
SETPAG ('DA4P')
DISINI ()
COMPLX ()
PAGERA ()

NAME ('X-axis', 'X')
NAME ('Y-axis', 'Y')

MIXALF ()
TITLIN ('Shaded Contour Plot', 1)
TITLIN ('F(X,Y) = (X[2$ - 1][2$ + (Y[2$ - 1][2$', 3)

SHDMOD ('POLY', 'CONTUR')
AXSPOS (450, 2670)
GRAF (0., 1.6, 0., 0.2, 0., 1.6, 0., 0.2)

HEIGHT (30)
DO I = 0, 11
  ZLEV[11-I] = 0.1 + I * 0.1
END DO

CONSHD (XRAY, N, YRAY, N, ZMAT, ZLEV, 12)

HEIGHT (50)
TITLE ()
DISFIN ()
```

Shaded Contour Plot

$$F(X,Y) = (X^2 - 1)^2 + (Y^2 - 1)^2$$

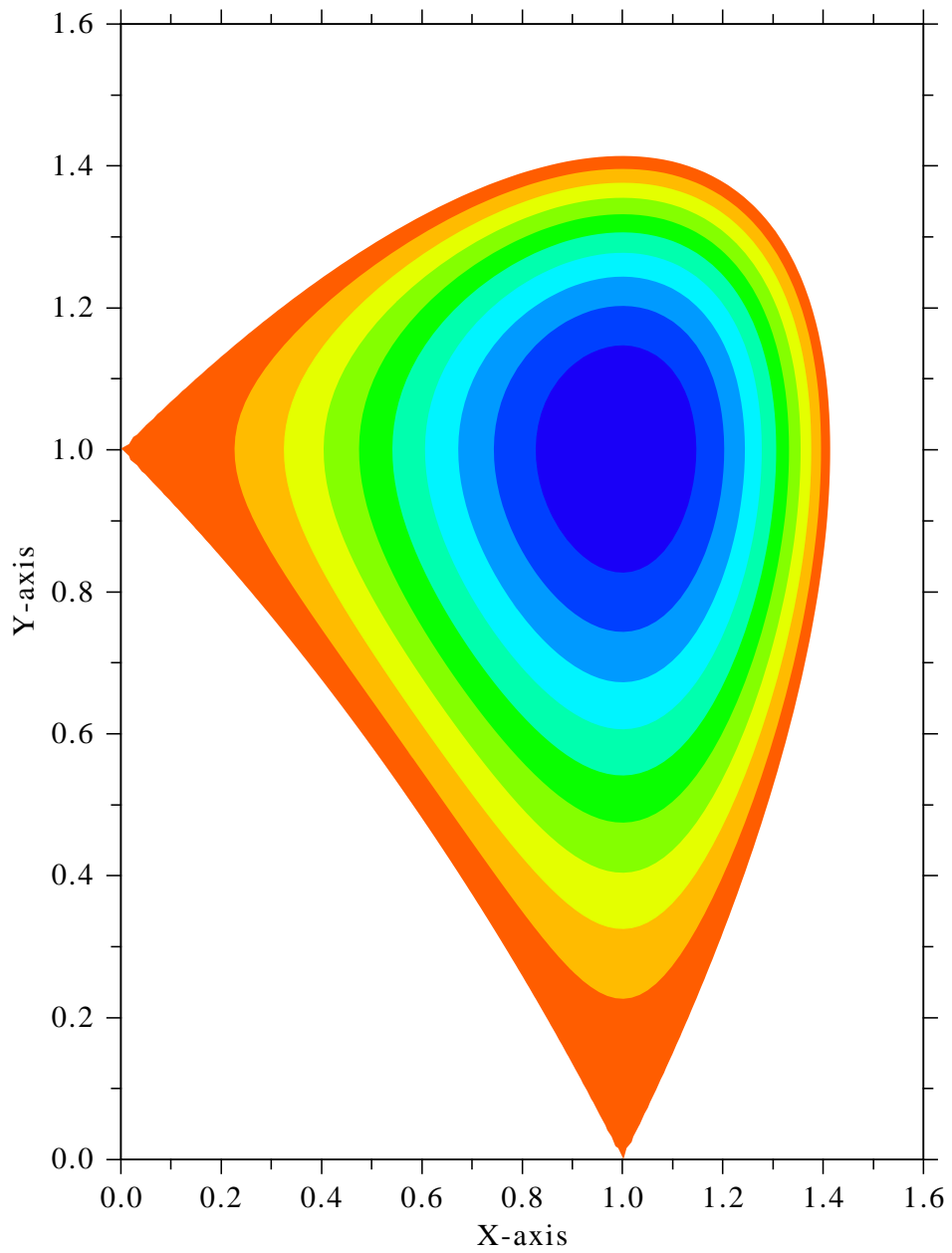


Figure C.6: Shaded Contour Plot

C.7 World Coastlines and Lakes

```
%GCL
// World Coastlines and Lakes

METAFL ('CONS')
DISINI ()
PAGERA ()
COMPLX ()

AXSPOS (400, 1850)
AXSLEN (2400, 1400)

NAME ('Longitude', 'X')
NAME ('Latitude', 'X')
TITLIN ('World Coastlines and Lakes', 3)

LABELS ('MAP', 'XY')
GRAFMP (-180.,180.,-180.,90.,-90.,90.,-90.,30.)

GRIDMP (1, 1)
COLOR ('GREEN')
WORLD ()
COLOR ('FORE')

HEIGHT (50)
TITLE ()
DISFIN ()
```

World coastlines and lakes

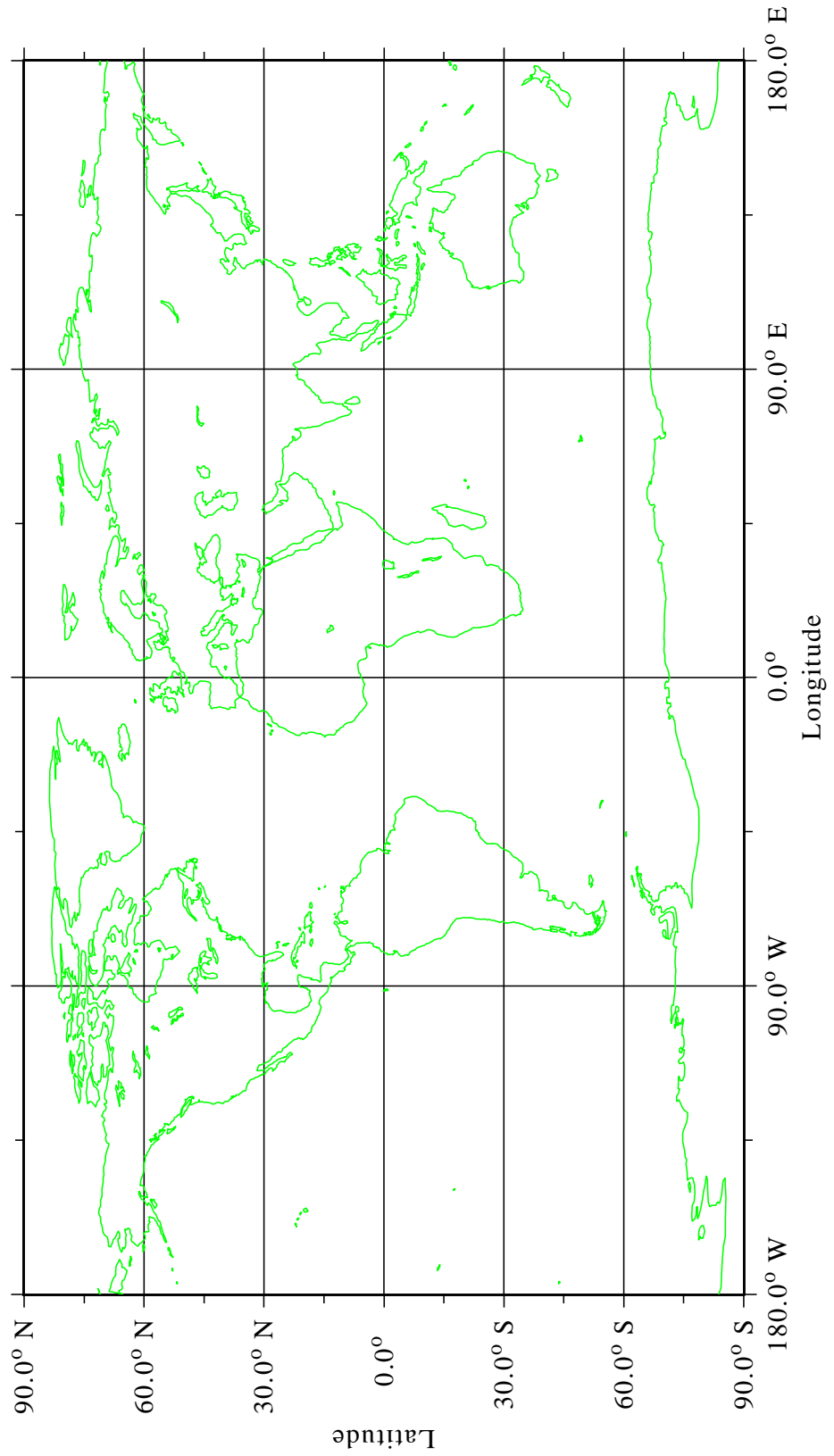


Figure C.7: World Coastlines and Lakes

C.8 Widgets

```
%GCL
// Widgets

CL1 = 'Item1|Item2|Item3|Item4|Item5'
CFIL = ' '

SWGTTT ('Example')
IP = WGINI ('VERT')
ID_LAB = WGLAB (IP, 'File Widget: ')
ID_FIL = WGFIL (IP, 'Open File', CFIL, '*.c')

ID_LAB = WGLAB (IP, 'List Widget: ')
ID_LIS = WGLIS (IP, CL1, 1)

ID_LAB = WGLAB (IP, 'Button Widgets')
ID_BT1 = WGBUT (IP, 'This is Button 1', 0)
ID_BT2 = WGBUT (IP, 'This is Button 2', 1)

ID_LAB = WGLAB (IP, 'Scale Widget')
ID_SCL = WGSCL (IP, ' ', 0., 10., 5., 1)

ID_OK = WGOK (IP)
WGFIN ()

CFIL = GWGFIL (ID_FIL)
ILIS = GWGLIS (ID_LIS)
IBT1 = GWGBUT (ID_BT1)
IBT2 = GWGBUT (ID_BT2)
XSCL = GWGSCL (ID_SCL)

FREE IP, CL1, ID_LAB, ID_OK, ID_FIL, ID_LIS, ID_BT1 @
      ID_BT2, ID_SCL
LIST
```



Figure C.8: Widgets

Index

ABS function 47
 ACOS function 47
 ARG function 48
 ARGCNT function 49
 Arrays 8
 character 9
 functions 49
 initializing 17
 multidimensional 9
 operations 12
 ASIN function 47
 ATAN function 47
 ATAN2 function 47
 ATONUM function 48

 BREAK statement 19
 BYTE command 22
 BYTE function 48

 CATARR function 49
 CEIL function 47
 CHAR command 22
 CHAR function 48
 CLOCK function 53
 Comments 15
 COMPLEX command 22
 Complex functions 48
 COMPLEX function 48
 CONJG function 48
 Constants 8
 numbers 8
 hexadecimal 8
 integers 8
 strings 8
 CONTINUE statement 20
 Conversing functions 48
 COS function 47
 COSH function 47

 DALLOC function 50
 Data files 33
 Data types 7
 DATBLK function 34
 DATCLS function 34
 DATCNT function 34
 DATE function 53
 DATFIL function 33
 DATHDR function 34
 DATMAT function 34
 DATRAY function 34
 DATVAR function 34
 DISGCL commands 16, 21
 BYTE 22
 CHAR 22
 COMPLEX 22
 CONTOUR 29
 CONSHADE 29
 DOUBLE 22
 EXIT 21
 FLOAT 22
 FREE 22
 HELP 21
 INCLUDE 21
 INT 22
 LIST 21
 LOGOFF 22
 LOGON 22
 PLOT3R 28
 PLOT3 28
 PLOT 27
 PRINT 22
 SCATTR 28
 SHORT 22
 SURF3 28
 SURFACE 28
 SURSHADE 28
 DISGCL script files 2
 DISGCL statements 2
 DISLIN functions 16
 DISLIN subroutines 15
 DO statement 18
 DOUBLE command 22
 DOUBLE function 48

 Examples 75
 3-D Colour Plot 80
 Contour Plot 88
 Data files 35
 Demonstration of CURVE 76
 Format specifications 38
 Input/output 45
 Polar Plots 78
 Shaded Contour Plot 84
 Surface Plot 82
 Widgets 90
 World Coastlines and Lakes 88
 EXIT command 21
 EXP function 47
 Expressions 4, 11
 EXTERN statement 24

 FALLOC function 50
 FCLOSE function 41
 FFLUSH function 42
 FGETC function 43
 FGETS function 43

File modes	41	FPRINTF	43
FLOAT command	22	FPUTC	44
FLOAT function	48	FPUTS	44
FLOOR function	47	FREAD	44
FMOD function	47	FSCANF	43
FOPEN function	41	FSEEK	42
Format specifications	37	FTELL	42
FPRINTF function	43	FWRITE	45
FPUTC function	44	GETARG	1
FPUTS function	44	GETENV	53
FREAD function	44	GETPID	53
FREE command	22	GETS	44
FSCANF function	43	IALLOC	50
FSEEK function	42	INT	14, 48
FTELL function	42	KEYCNT	49
FUNCTION statement	24	LOG10	47
Function	49	LOG	47
ABS	47	MAXARR	49
ACOS	47	MINARR	49
ARGCNT	49	NUMTOA	48
ASIN	47	PRINTF	37
ATAN2	47	PUTS	44
ATAN	47	RAND	53
ATONUM	48	REMOVE	41
BYTE	14, 50	RENAME	42
CATARR	47	REWIND	42
CEIL	47	SCANF	40
CHAR	14, 48	SHORT	14, 48
CLOCK	53	SINH	47
COMPLEX	14, 48	SIN	47
COSH	47	SPRINTF	39
COS	47	SQRT	47
DALLOC	50	SRAND	53
DATBLK	34	SSCANF	40
DATCNT	34	STRING	14, 48
DATE	53	STRLEN	51
DATFIL	33	STRLWR	51
DATHDR	34	STRREP	51
DATMAT	34	STRSTR	51
DATRAY	34	STRUPR	51
DATVAR	34	SUBARR	49
DOUBLE	14, 48	SUBMAT	49
EXP	47	SUBSTR	51
FALLOC	50	SYSTEM	53
FCLOSE	41	TANH	47
FFLUSH	42	TAN	47
FGETC	43	TIME	53
FGETS	43	TRMLen	51
FLOAT	14, 48	TRPMAT	49
FLOOR	47	user-defined	23
FMOD	47	VARCNT	49
FOPEN	41	VARDEF	49

VARDIM	49	SURFACE	28
VARTYP	49	SURSHADE	28
FWRITE function	45	variables	30
GETARG function	1	Random number functions	53
GETENV function	53	REMOVE function	41
GETPID function	53	RENAME function	42
GETS function	44	RETURN statement	24
GOTO statement	20	REWIND function	42
HELP command	21	SCANF function	40
IALLOC function	50	SCATTR command	27
IF constructs	17	SHORT command	22
IF statement	17	SHORT function	48
IMAG function	48	SIN function	47
INCLUDE command	21	SINH function	47
INT command	22	SPRINTF function	39
INT function	48	SQRT function	47
Intrinsic functions	47	SSCANF function	40
KEYCNT function	49	Statements	2
LIST command	21	BREAK	19
LOG function	47	calling DISLIN routines	15
LOG10 function	47	comments	15
LOGOFF command	22	CONTINUE	20
LOGON command	22	DO	18
Mathematical functions	47	EXTERN	24
MAXARR function	49	FUNCTION	24
Memory allocating functions	50	GOTO	20
MINARR function	49	identification of GCL files	15
NUMTOA function	48	IF	17
Operators	11	IF constructs	17
Parameters	25	RETURN	24
PLOT command	27	SUBROUTINE	24
PLOT3 command	28	SWITCH	18
PLOT3R command	28	WHILE	19
PRINT command	22	STRING function	48
PRINTF function	37	String functions	51
PUTS function	44	Strings	9
Quickplot	4, 27	STRLEN function	51
CONTOUR	29	STRLWR function	51
CONSHADE	29	STRREP function	51
PLOT3R	28	STRSTR function	51
PLOT3	28	STRUPR function	51
PLOT	27	SUBARR function	49
scaling	29	SUBMAT function	49
SCATTR	27	SUBROUTINE statement	24
SURF3	28	Subroutines user-defined	23
		SUBSTR function	51
		SURF3 command	28
		SWITCH statement	18
		Syntax of data files	33
		Syntax of GCL script files	2
		Syntax of GCL statements	2

Syntax of the GCL command	1	%ZDIG	30
System commands	20	%ZLAB	30
System functions	53	%ZLEN	30
SYSTEM function	53	%ZMAX	29
System variables	8	%ZMIN	29
%ARGn	1	%ZOR	29
%CONSHD	31	%ZSCL	30
%ERASE	27	%ZSTEP	29
%HNAME	30	%ZTIC	30
%HSYMBL	30	TAN function	47
%HTITLE	30	TANH function	47
%H	30	Time functions	53
%INCMRK	30	TIME function	53
%MARKER	30	TRMLEN function	51
%NARGS	1	TRPMAT function	49
%POLCRV	30	Type conversions	12
%T1	30	VARCNT function	49
%T2	30	VARDEF function	49
%T3	30	VARDIM function	49
%T4	30	Variables	7
%VTITLE	31	VARTYP function	49
%X	30	WHILE statement	19
%X3LEN	31		
%X3VIEW	31		
%XDIG	30		
%XLAB	30		
%XLEN	30		
%XMAX	29		
%XMIN	29		
%XOR	29		
%XPOS	30		
%XRES	30		
%XSCL	30		
%XSTEP	29		
%XTIC	30		
%Y	30		
%Y3LEN	31		
%Y3VIEW	31		
%YDIG	30		
%YLAB	30		
%YLEN	30		
%YMAX	29		
%YMIN	29		
%YOR	29		
%YPOS	30		
%YRES	30		
%YSCL	30		
%YSTEP	29		
%YTIC	30		
%Z	30		
%Z3LEN	31		
%Z3VIEW	31		

